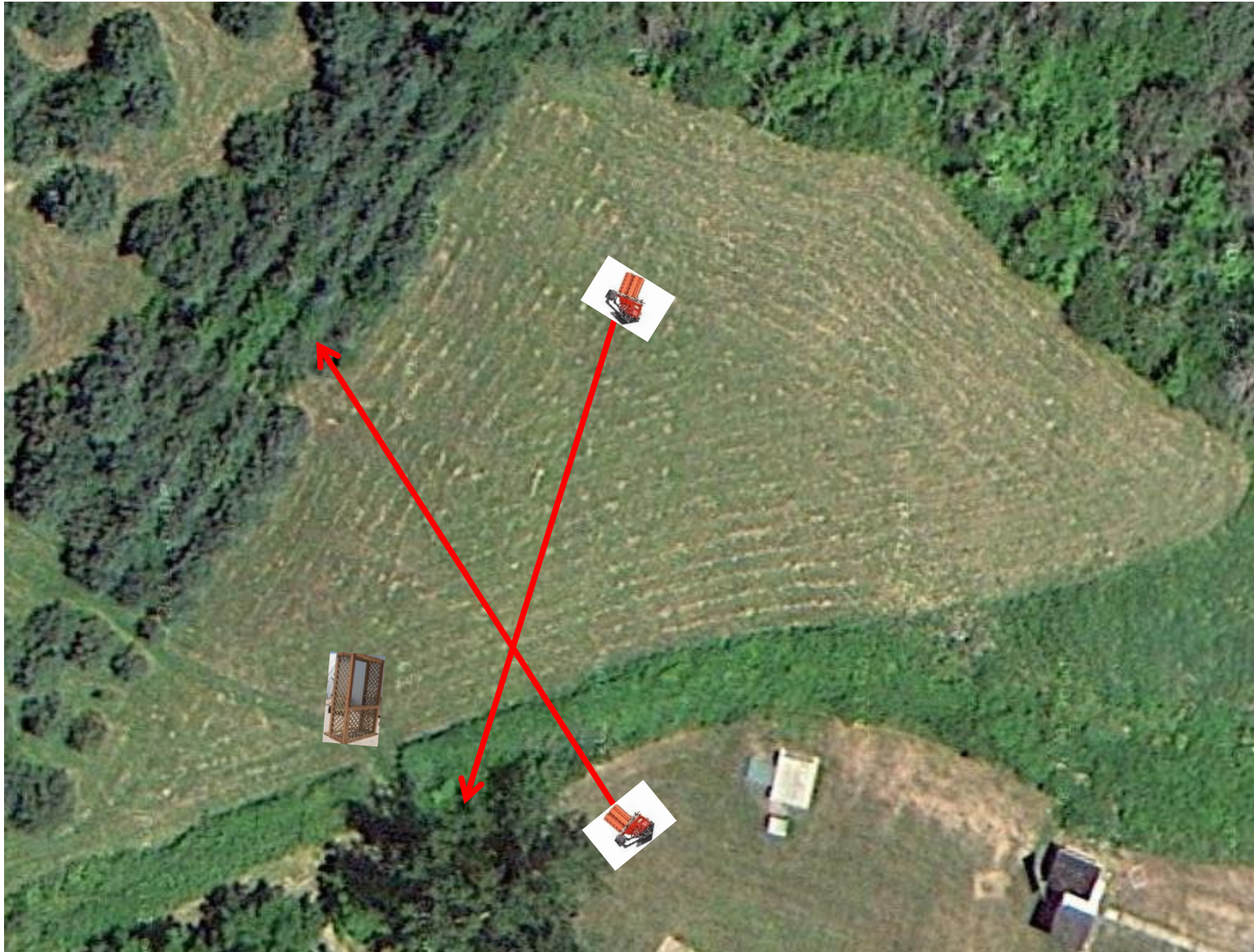


3 Report Pair (6)  
Promatic (Right) Then Promatic (Left)

# Trap Field



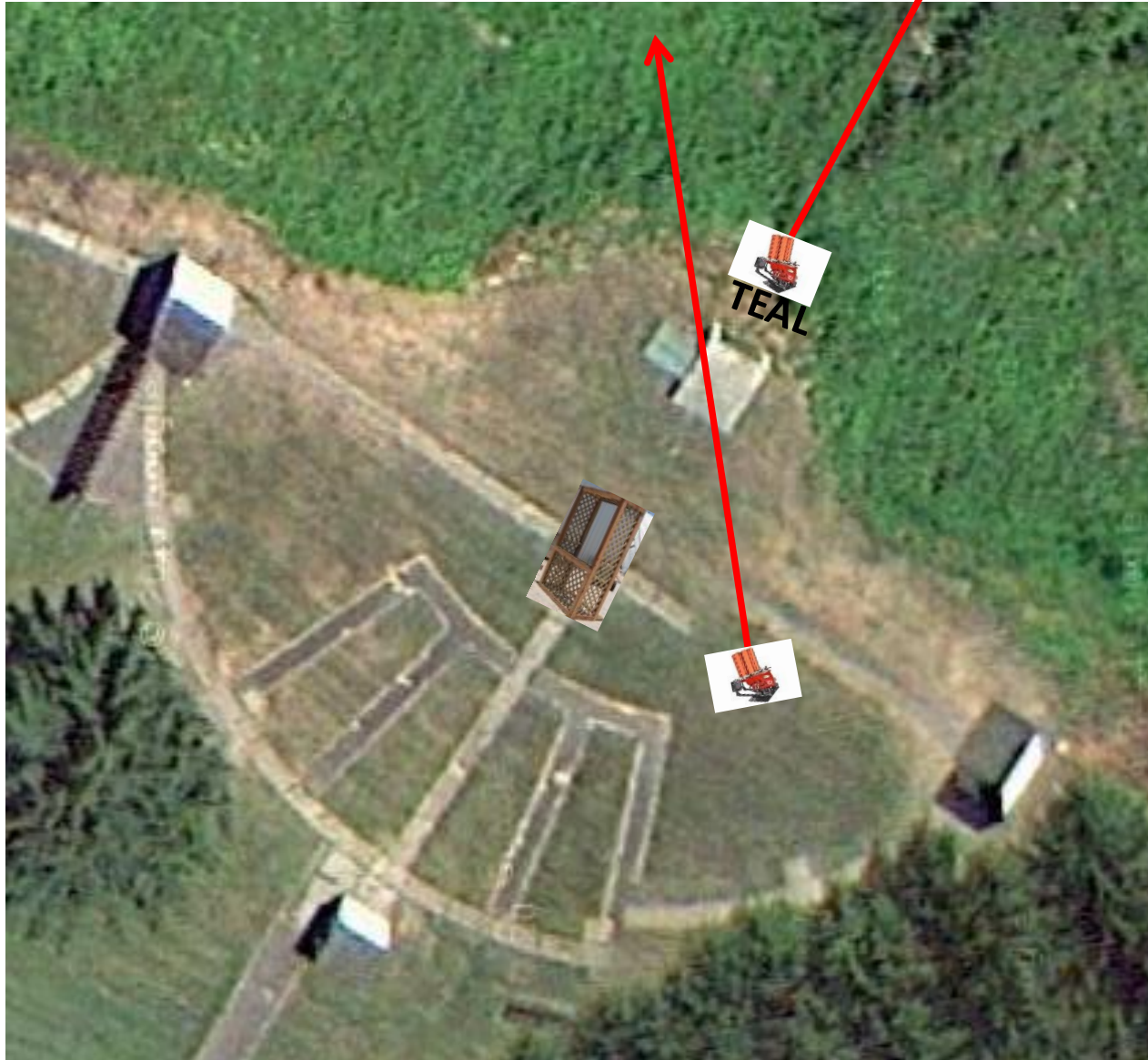
3 Simo Pair (6)  
High House And Promatic

5-Stand



3 Report Pair (6)  
Promatic (Teal) Then Promatic

Skeet 2



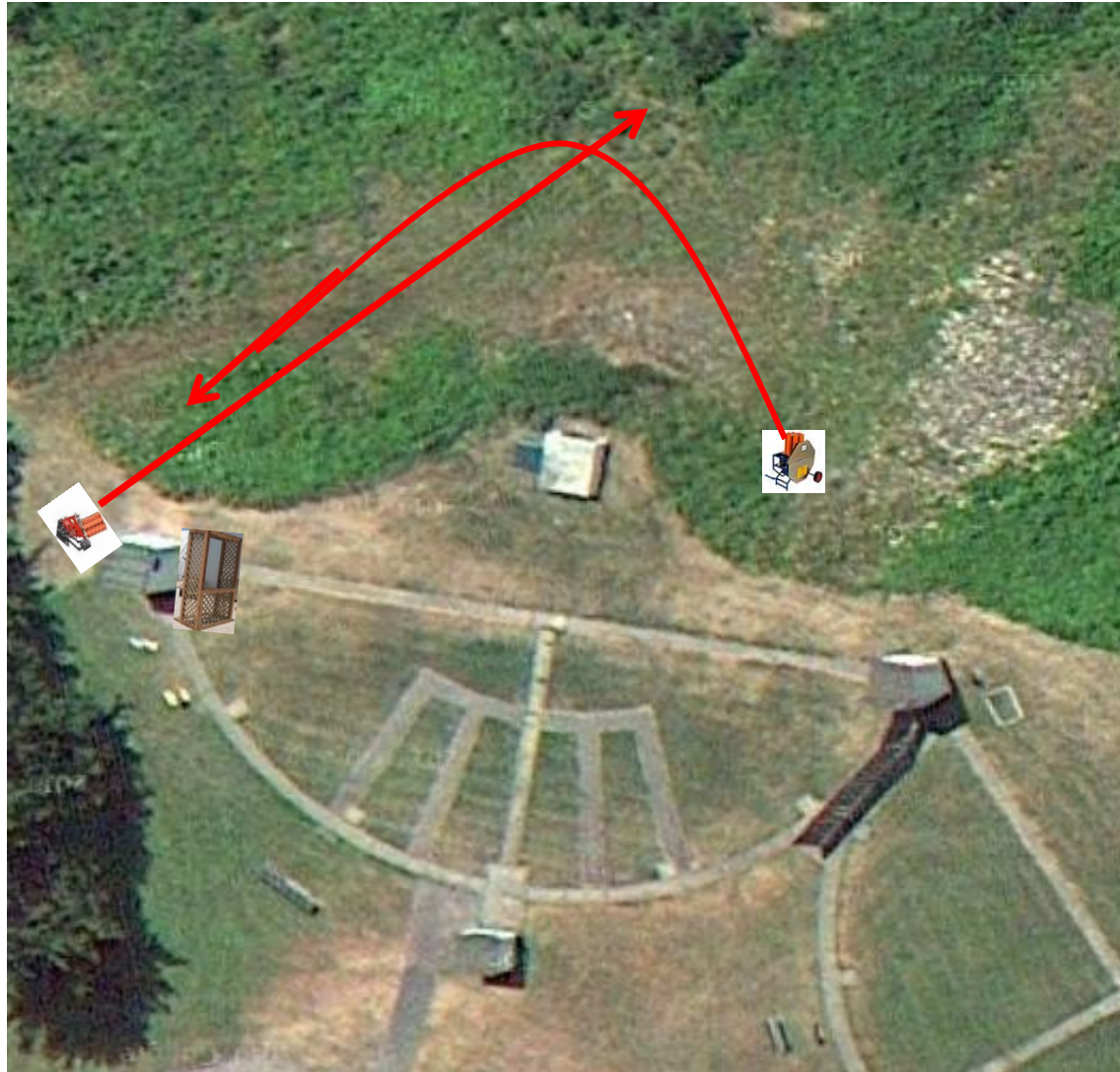
**\*\*NOT USED\*\***

# Gallows



3 Report Pair (6)  
Promatic Then Rabbue

# Skeet 3



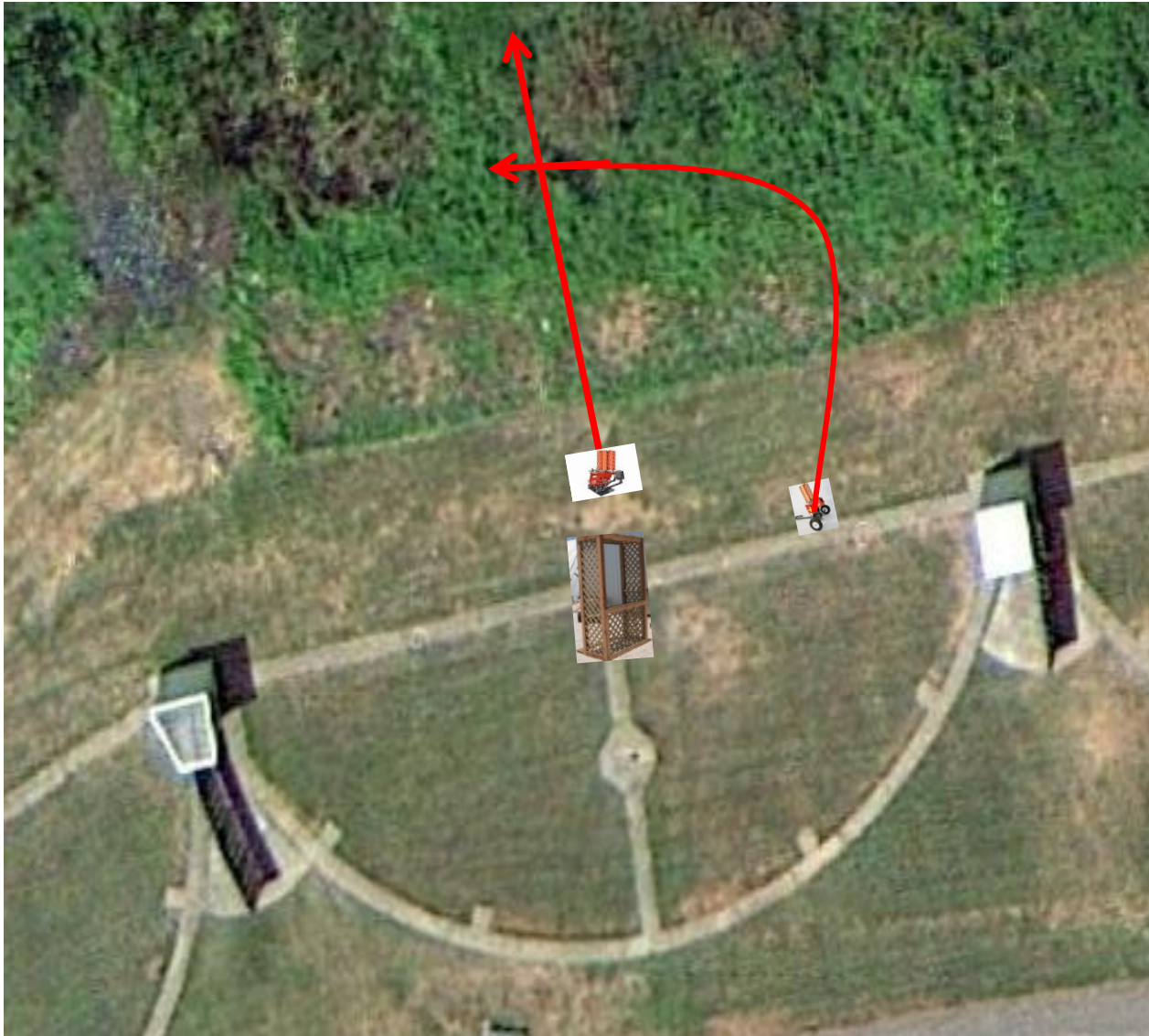
3 Report Pair (6)  
Low House Then Battue

# Skeet 4



4 Simo Pair (8)  
Chandelle And Promatic

# Skeet 5



2 Following Pair (4)  
Promatic (Lift) Then Promatic (Lift)

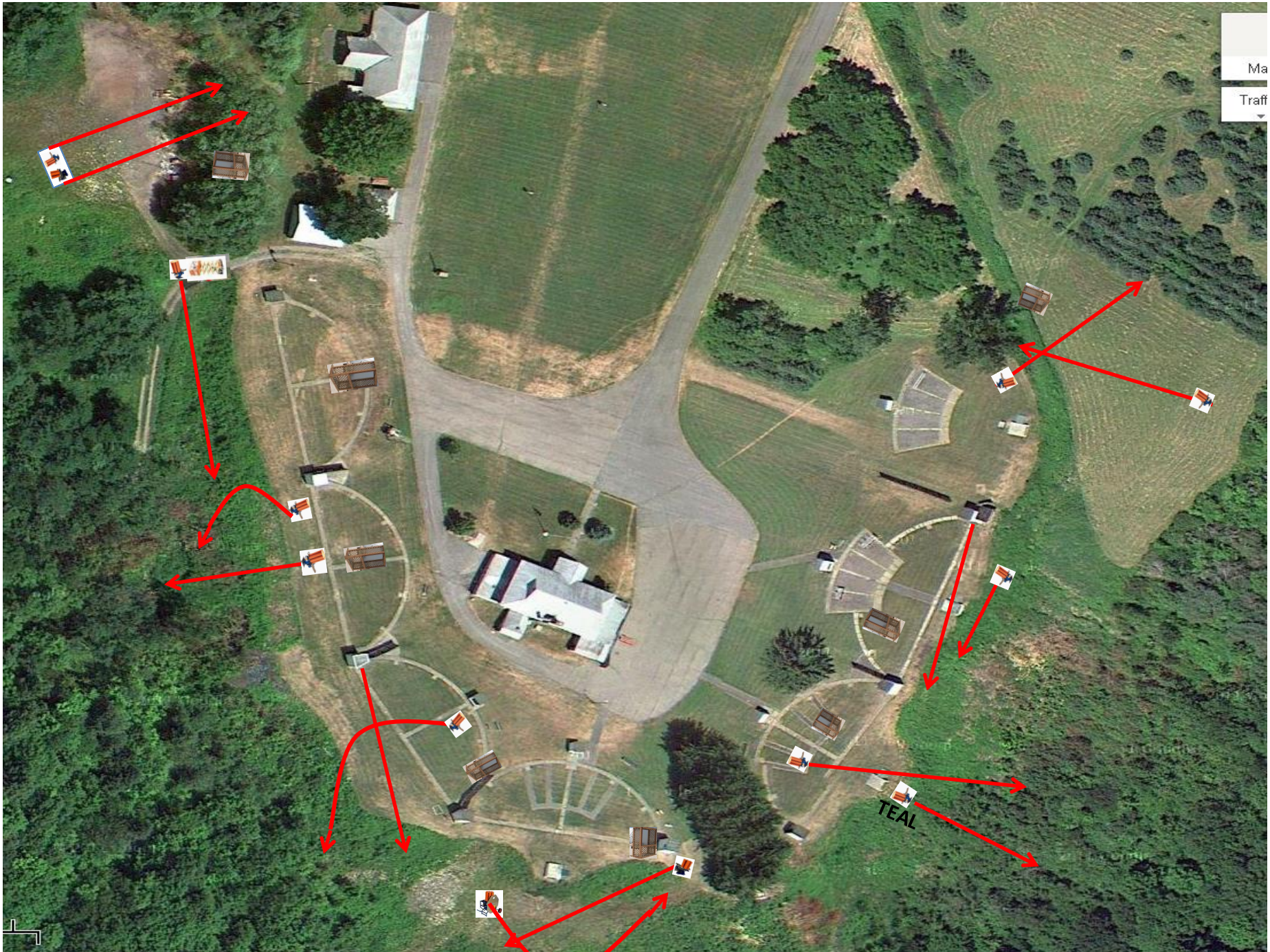
# Skeet 6



3 Simo Pair (6)  
Promatic A And Promatic B

# The Pit





TEAL

# The Menu – 05/16/2026

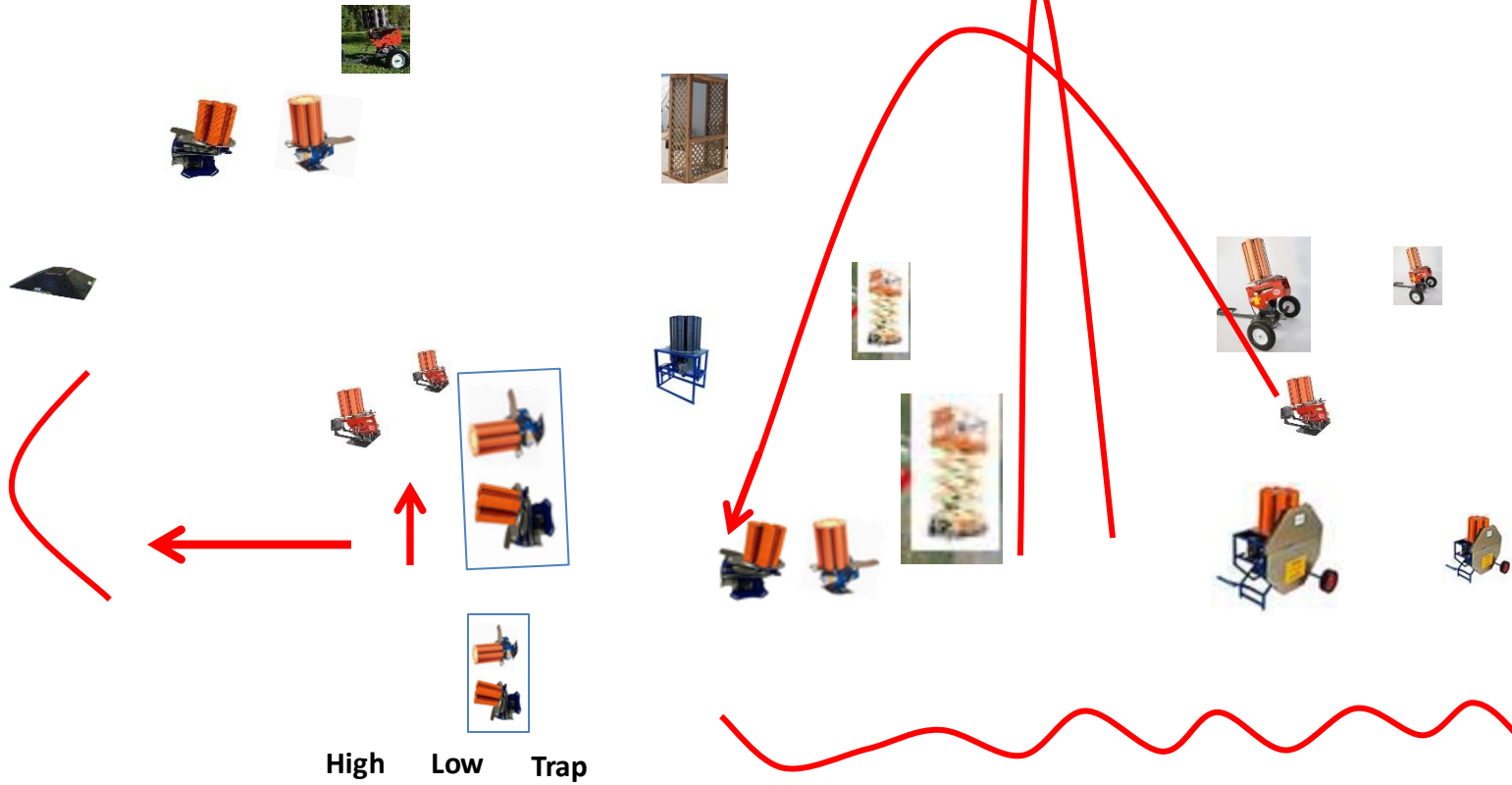
*The Menu Is Only A Suggestion*

- |               |                           |   |            |
|---------------|---------------------------|---|------------|
| 1) Trap Field | - <b>3 Report Pair</b>    | - Promatic (Right) Then Promatic (Left) | <b>(6)</b> |
| 2) 5-Stand    | - <b>3 Simo Pair</b>      | - Promatic And High House               | <b>(6)</b> |
| 3) Skeet #2   | - <b>3 Report Pair</b>    | - Promatic (TEAL) Then Promatic (MIDI)  | <b>(6)</b> |
| 4) Gallows    | - <b>**NOT USED**</b>     |   |            |
| 5) Skeet #3   | - <b>3 Report Pair</b>    | - Promatic Then Rabbue                  | <b>(6)</b> |
| 6) Skeet #4   | - <b>3 Report Pair</b>    | - Low House Then Battue                 | <b>(6)</b> |
| 7) Skeet #5   | - <b>4 Simo Pair</b>      | - Chandelle And Promatic                | <b>(8)</b> |
| 8) Skeet #6   | - <b>2 Following Pair</b> | - Promatic (Lift) Then Promatic (Lift)  | <b>(4)</b> |
| 9) The Pit    | - <b>4 Simo Pair</b>      | - Promatic (A) And Promatic (B)         | <b>(8)</b> |

-----  
**(50)**

**CLUBHOUSE PHONE NUMBER: 315-749-8902**

# Standard Images



High Low Trap

**\*\* Traps are the two on the trailer \*\***

- 11 Promatic/Mec
- 1 Promatic Rabbit
- 1 Promatic Battue
- 1 Mec Chondel
- 1 Scissor Lift