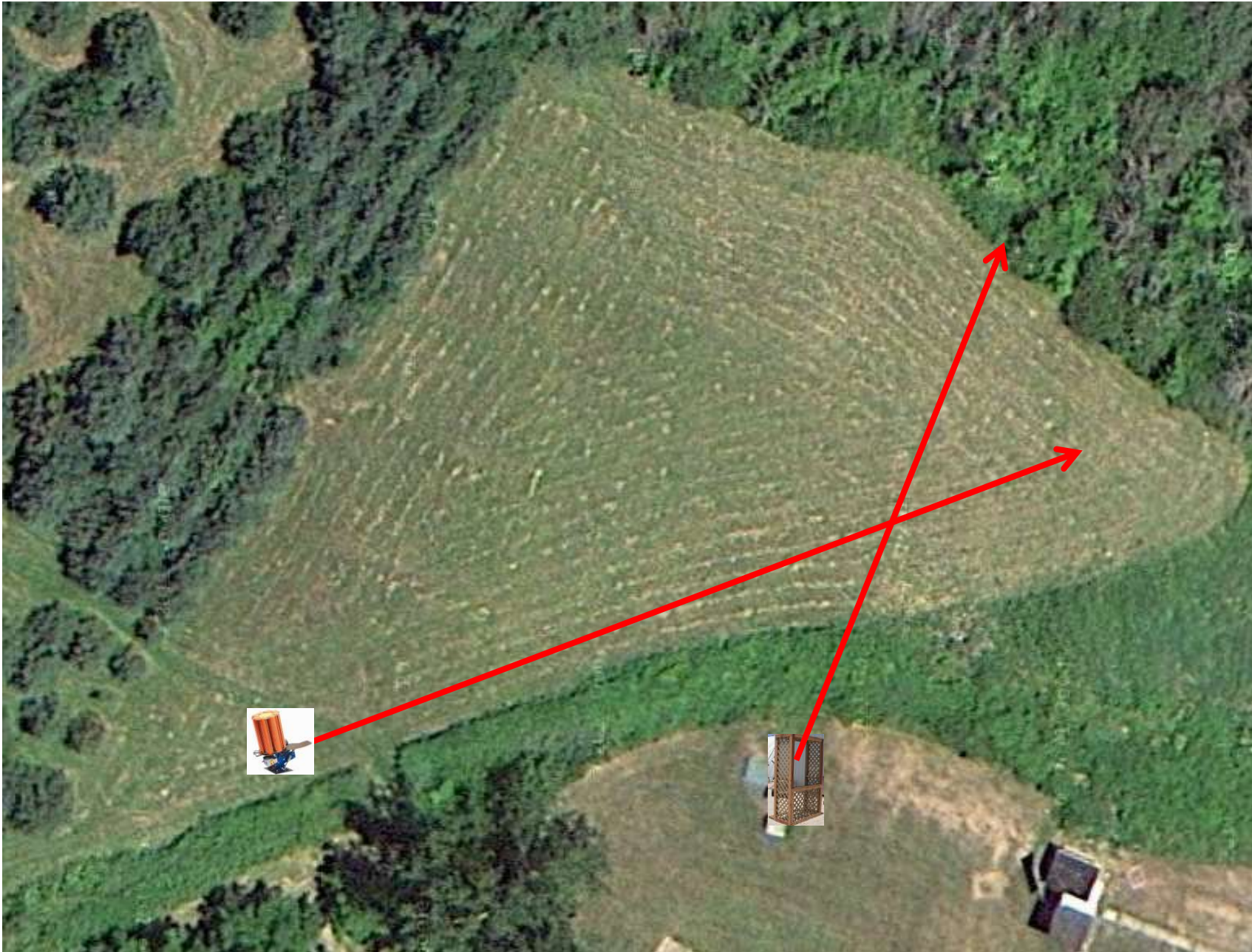


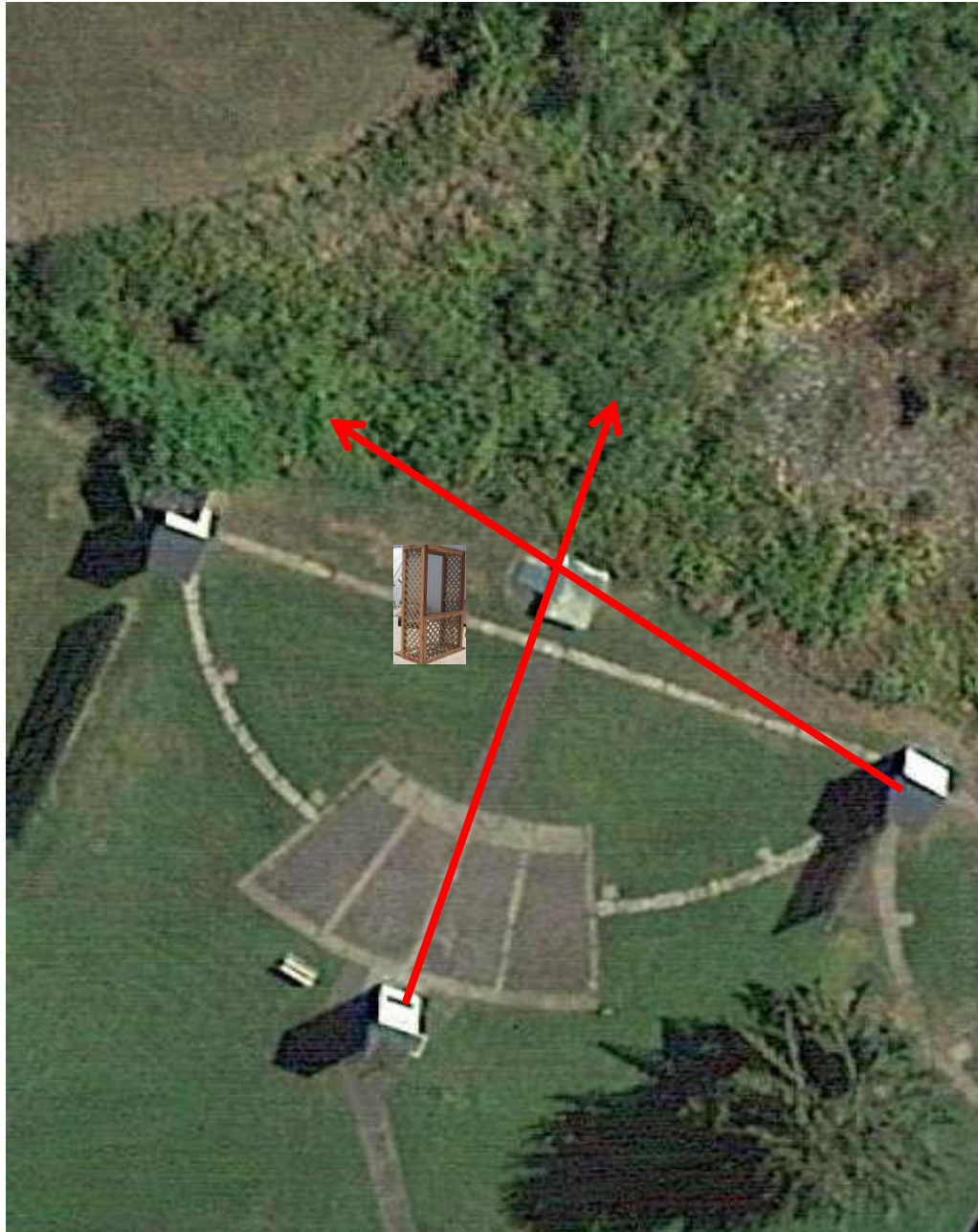
3 Report Pair (6)  
Trap House then Promatic  
**\*\* Cage on top of Trap House \*\***

# Trap Field



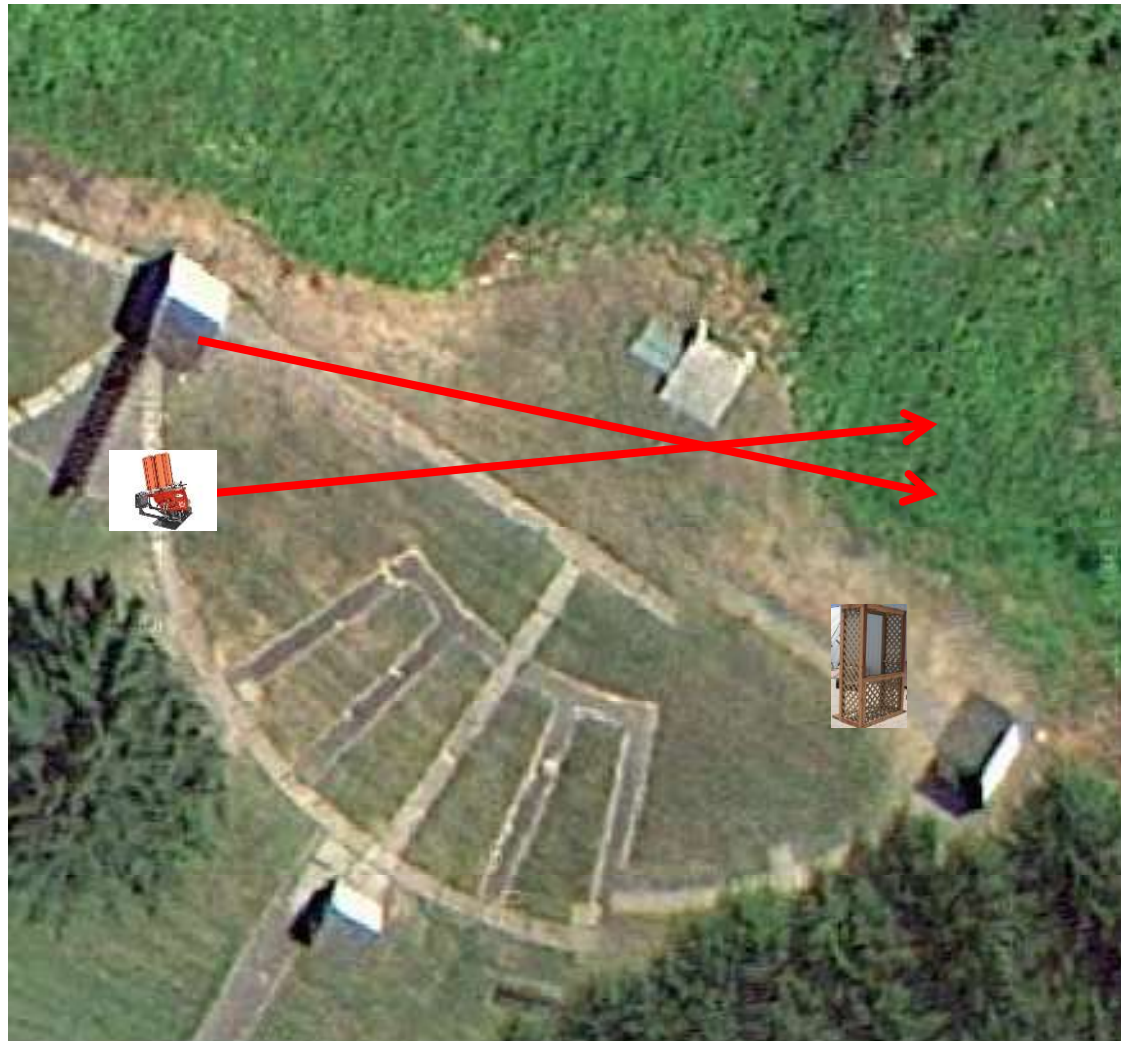
3 Report Pair (6)  
Low House then Overhead

5-Stand



3 Simo Pair (6)  
High House and Promatic  
**\*\*Cage on station 7\*\***

# Skeet 2



2 Following Pair (4)  
Promatic then Promatic  
***Hold the Button Down***

# Gallows



3 Report Pair (6)

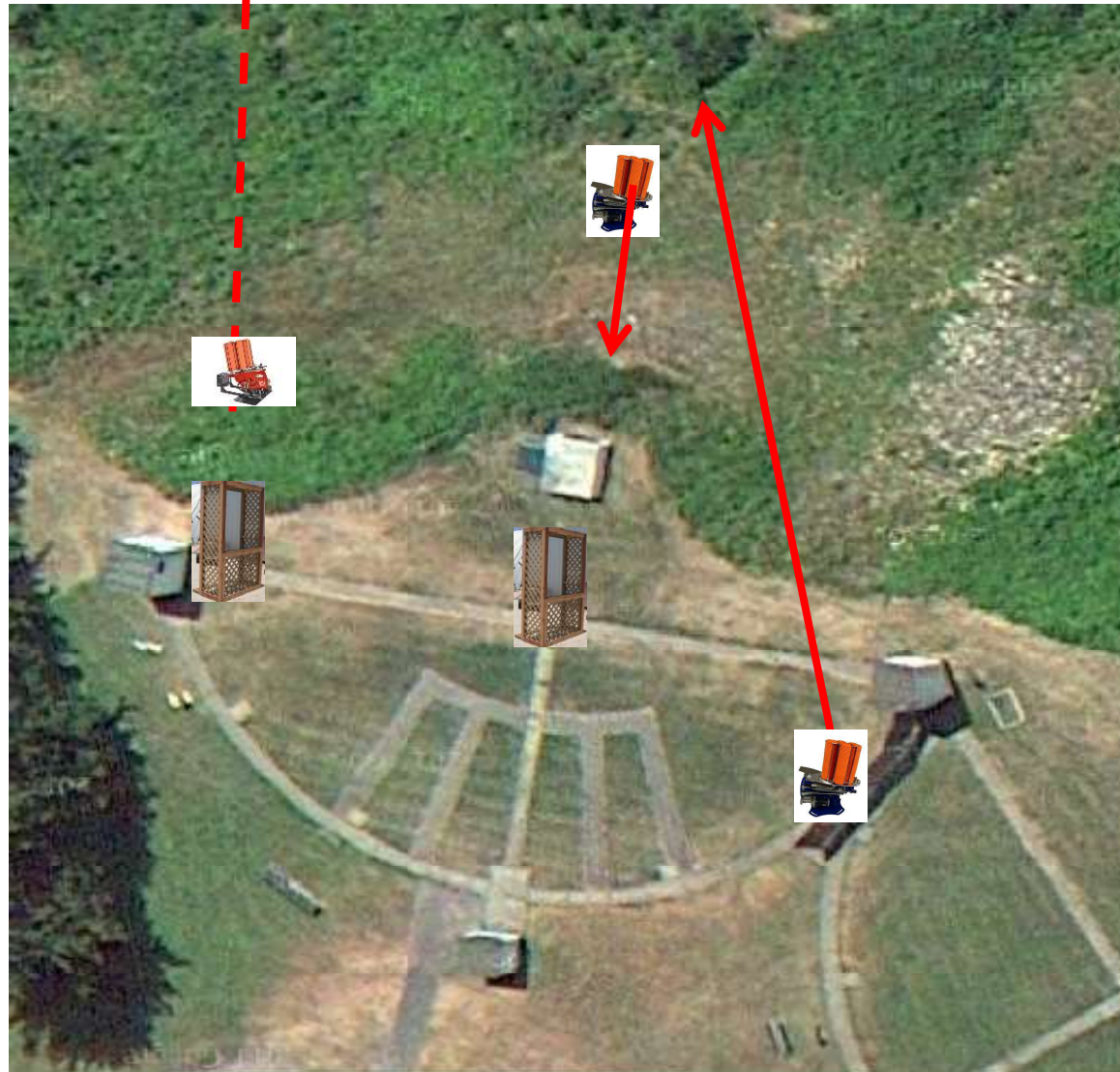
Promatic (Front-Teal) then Promatic (Right)

**\*\* Promatic Front As Far Back as Possible \*\***

**\*\* Target Will Be Coming At the Shooter \*\***

**\*\* Find Trap With Weakness Spring \*\***

# Skeet 3



3 Report Pair (6)  
Promatic then High House

# Skeet 4



3 Report Pair (6)  
Promatic then Mec Chondel  
**\*\* Promatic Low Straight Out \*\***

# Skeet 5



3 Report Pair (6)  
Promatic (A) then Promatic (B)  
***Dual Traps on the Trailer***

# Skeet 6

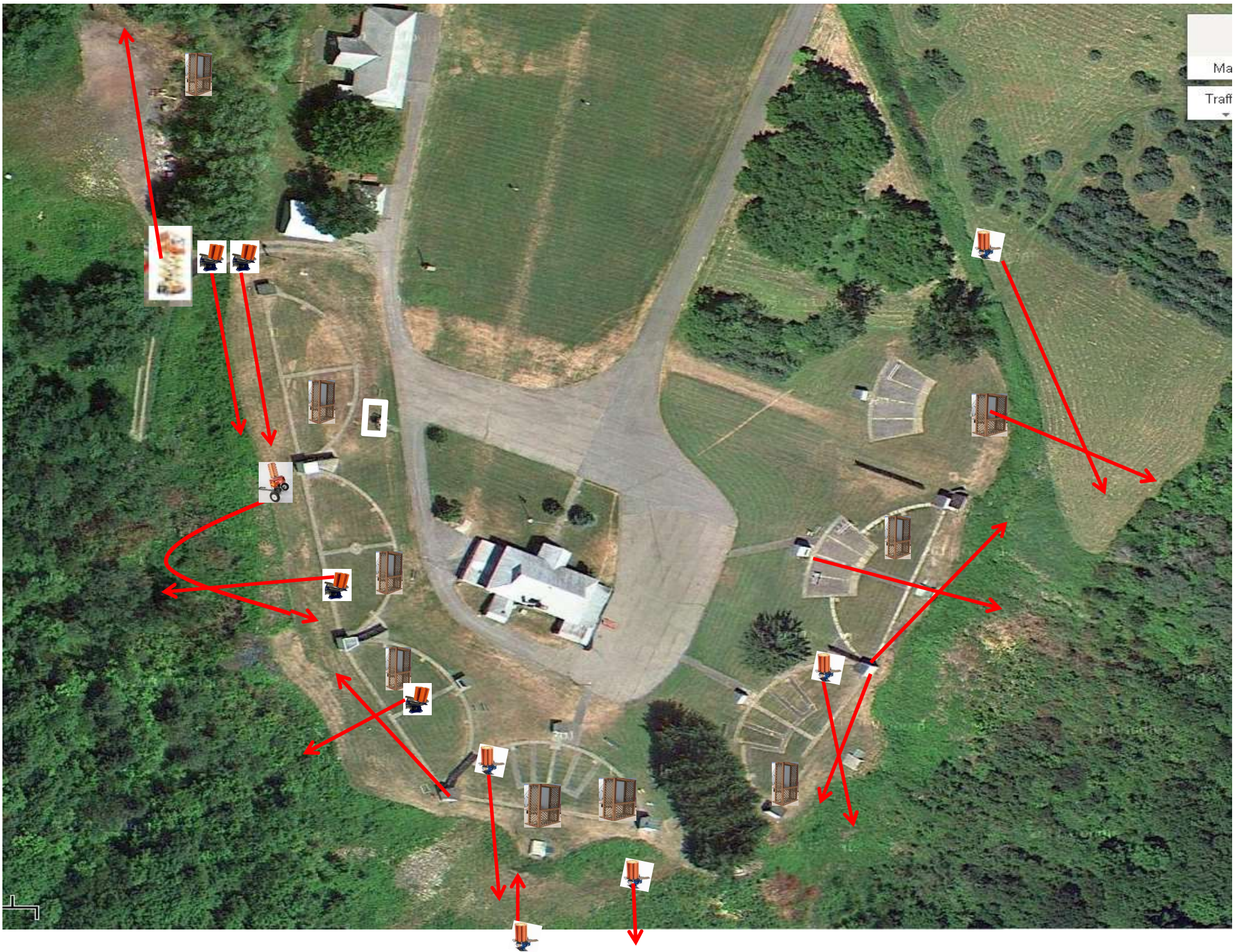




2 Report Pair (4)  
Promatic (Lift)

# The Pit





Ma

Traff

# The Menu – 05/07/2022

1) Trap Field	- <b>3 Report Pair</b>	- Trap House then Promatic	(6)
2) 5-Stand	- <b>3 Report Pair</b>	- Low House then Overhead	(6)
3) Skeet #2	- <b>3 Simo Pair</b>	- High House then Promatic	(6)
4) Gallows	- <b>2 Following Pair</b>	- Promatic then Promatic	(4)
<b>** Hold the Button Down **</b>			
5) Skeet #3	- <b>3 Report Pair</b>	- Promatic (Front-Teal) then Promatic (Right)	(6)
6) Skeet #4	- <b>3 Report Pair</b>	- Promatic then High House	(6)
7) Skeet #5	- <b>3 Report Pair</b>	- Promatic then Mec Chondel	(6)
8) Skeet #6	- <b>3 Report Pair</b>	- Promatic (A) then Promatic (B)	(6)
9) The Pit	- <b>2 Report Pair</b>	- Promatic (Lift) then Promatic (Lift)	(4)
			-----
			(50)