

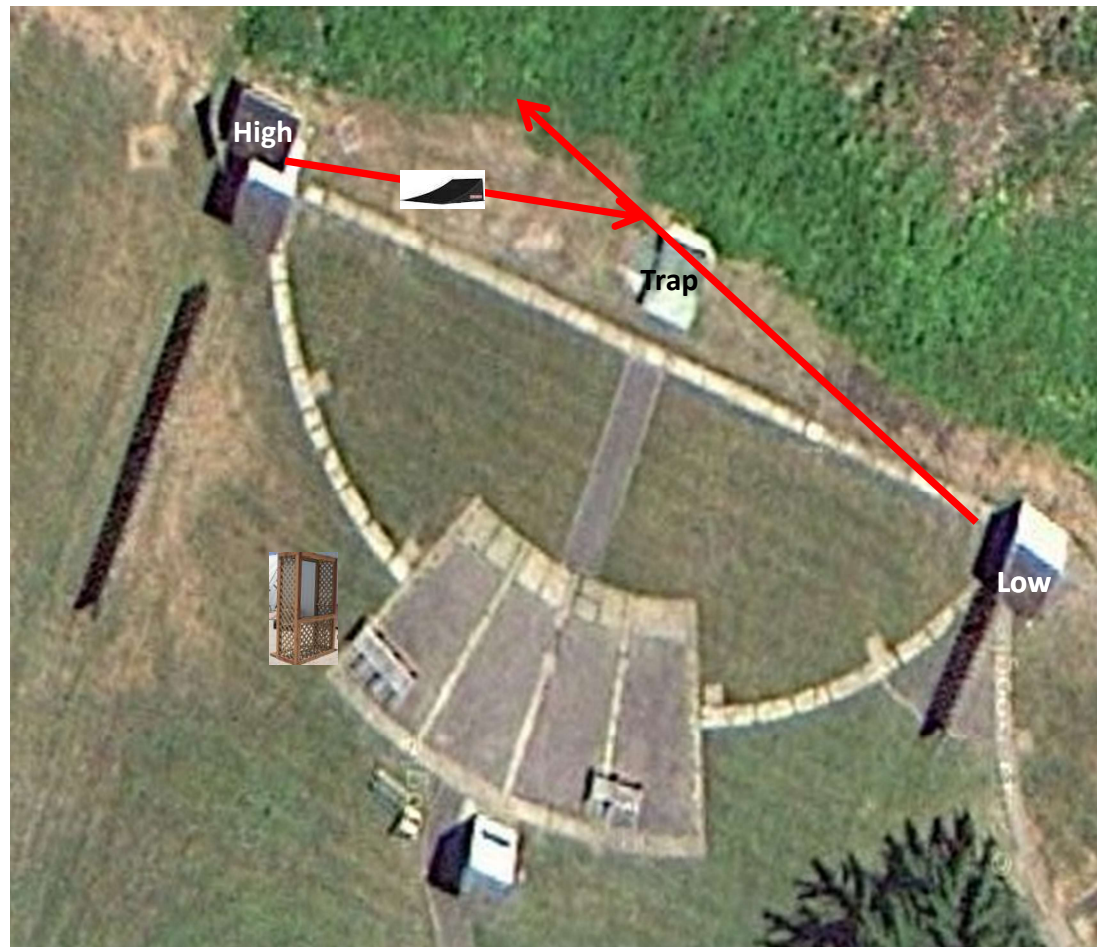
3 Boxes of Targets
3 Simo Pair (6)
Trap House and
Promatic



Trap Field

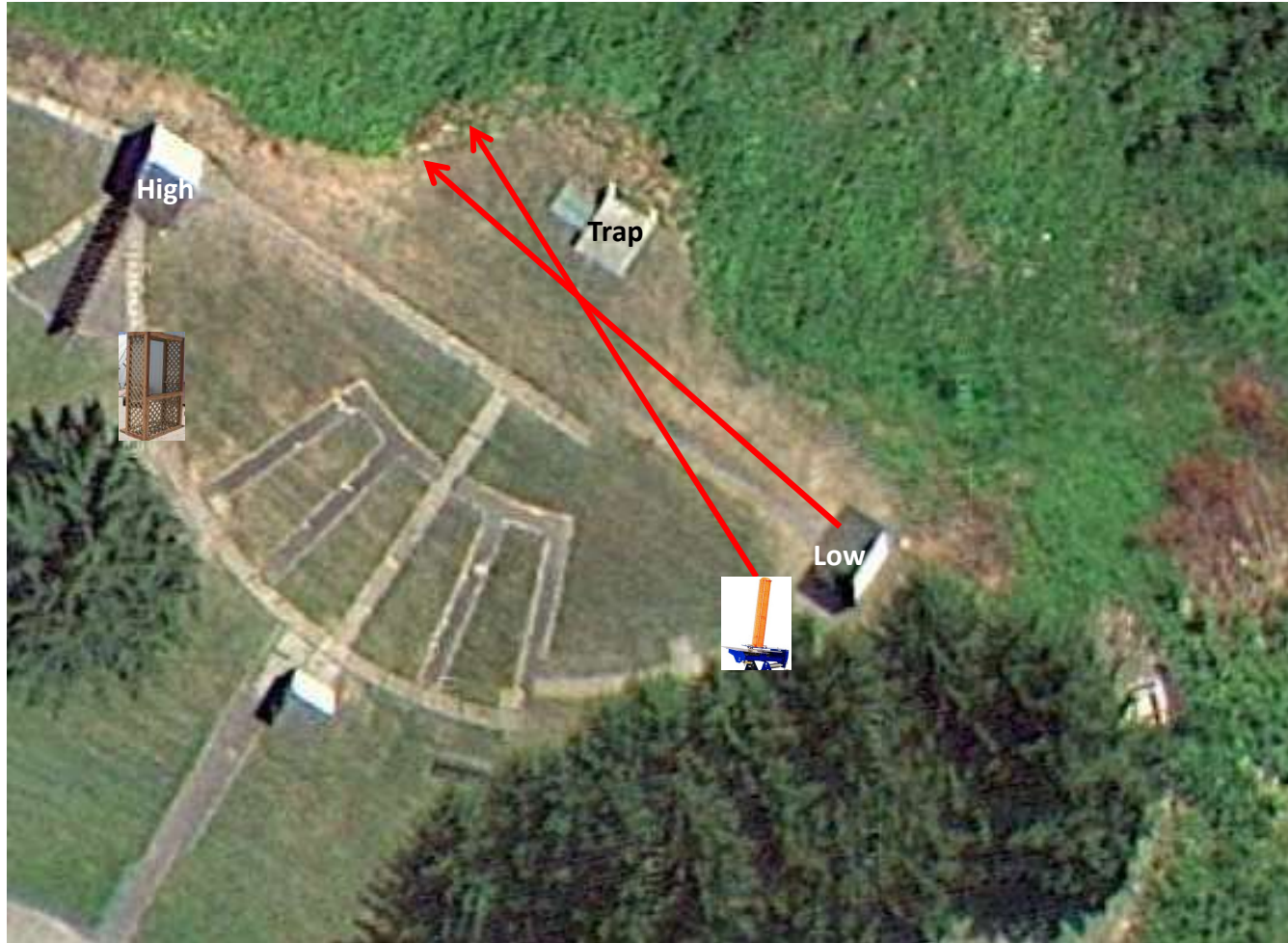
2 Boxes of Targets
2 Report Pair (4)
Rabbit then Low House
Cage back by the bench
Long Shot

5-Stand



3 Boxes of Targets
3 Simo Pair (6)
Low House and Automatic
Note: Both should go over the center stake

Skeet 2



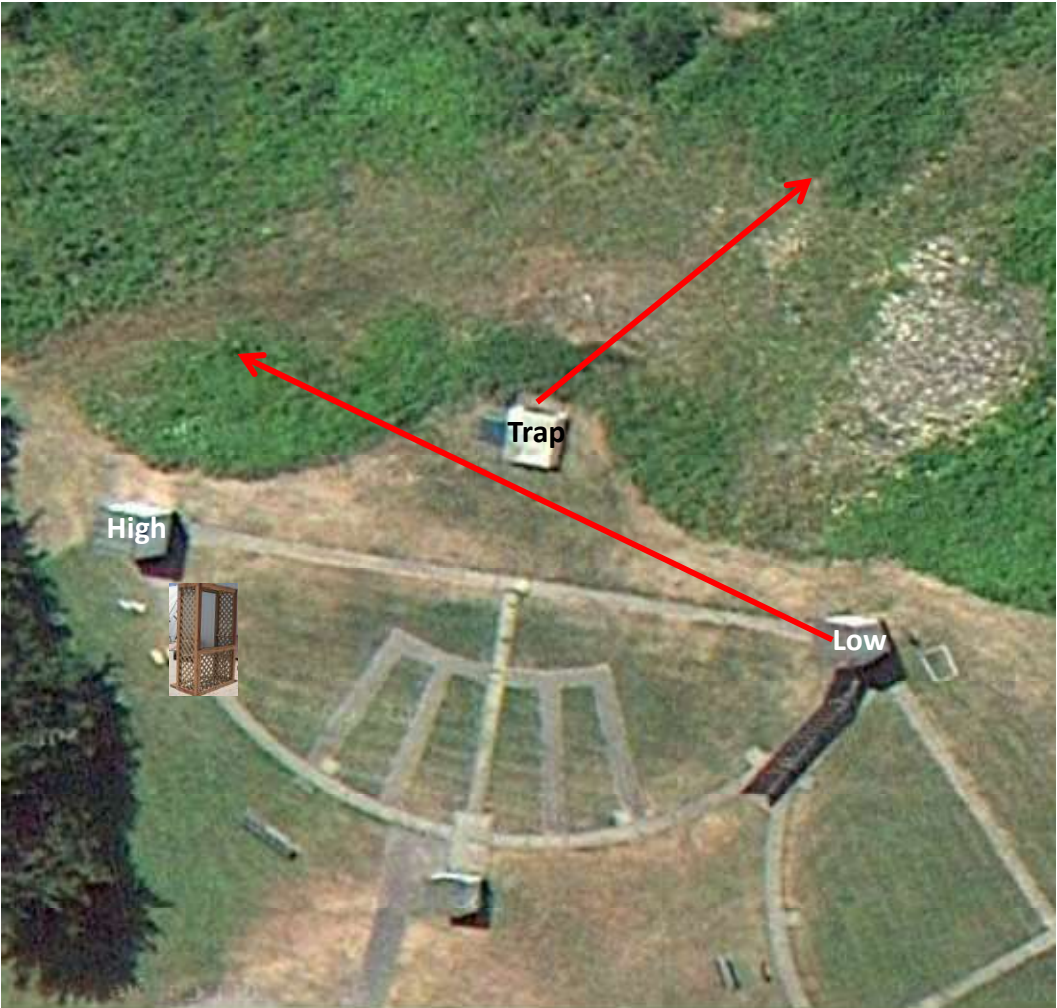
2 Boxes of Targets
2 Following Pair (4)
Automatic then Automatic
(Hold The Button Down)

Gallows



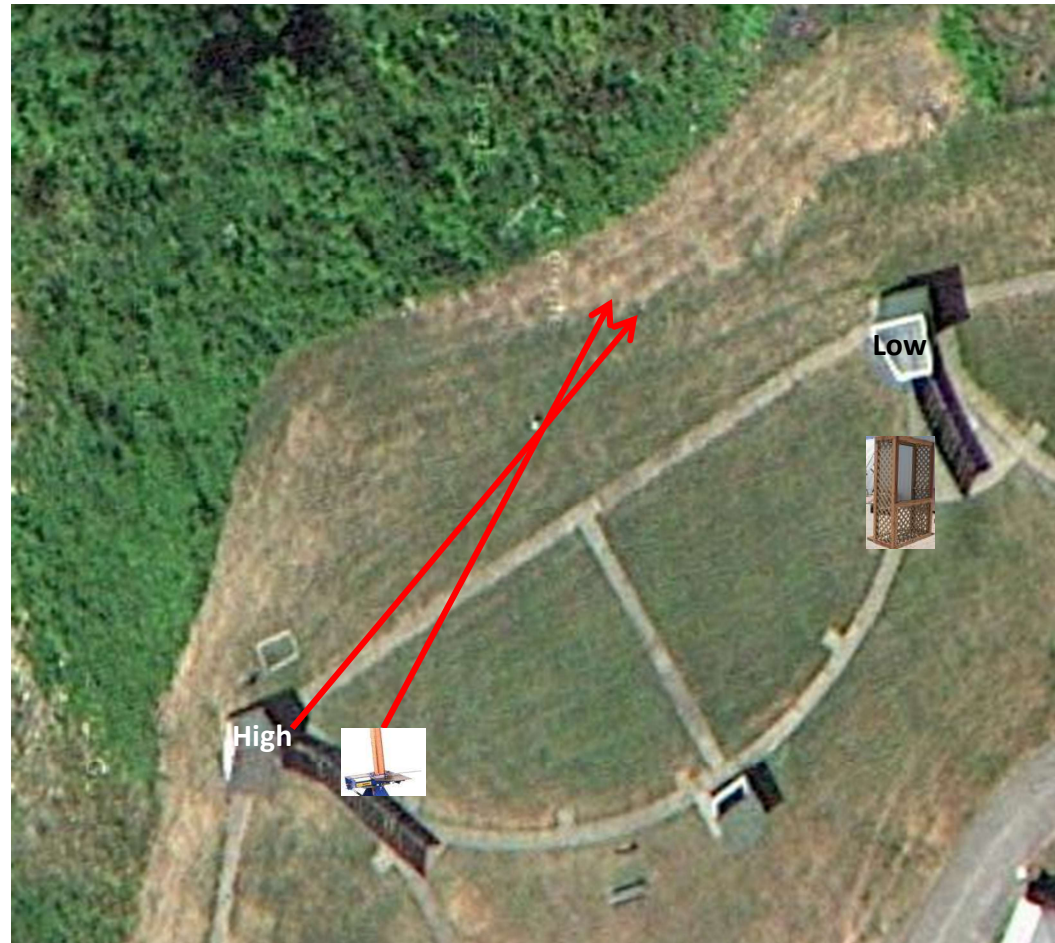
3 Boxes of Targets
3 Simo Pair (6)
Trap House and Low House

Skeet 3



3 Boxes of Targets
3 Simo Pair (6)
High House and Automatic
Note: Both should go over the center stake

Skeet 4



Skeet 5

3 Boxes of Targets
3 Following Pair (6)
Promatic then Promatic

Note: As High As You Can Go
Hold The Button Down



Skeet 6

3 Boxes of Targets
3 Following Pair (6)
Promatic then Promatic
Note: As High As You Can Go - Incoming
Hold The Button Down



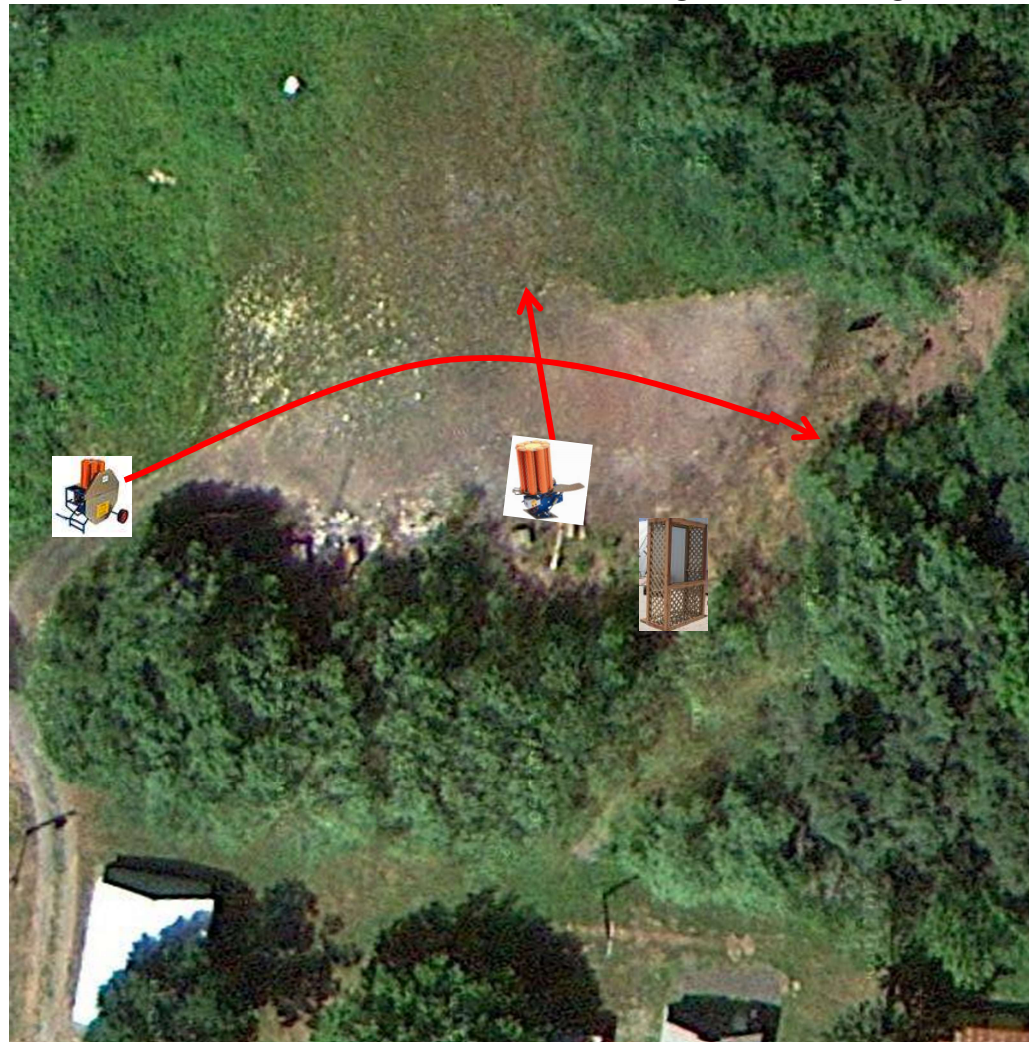
3 Boxes of Targets

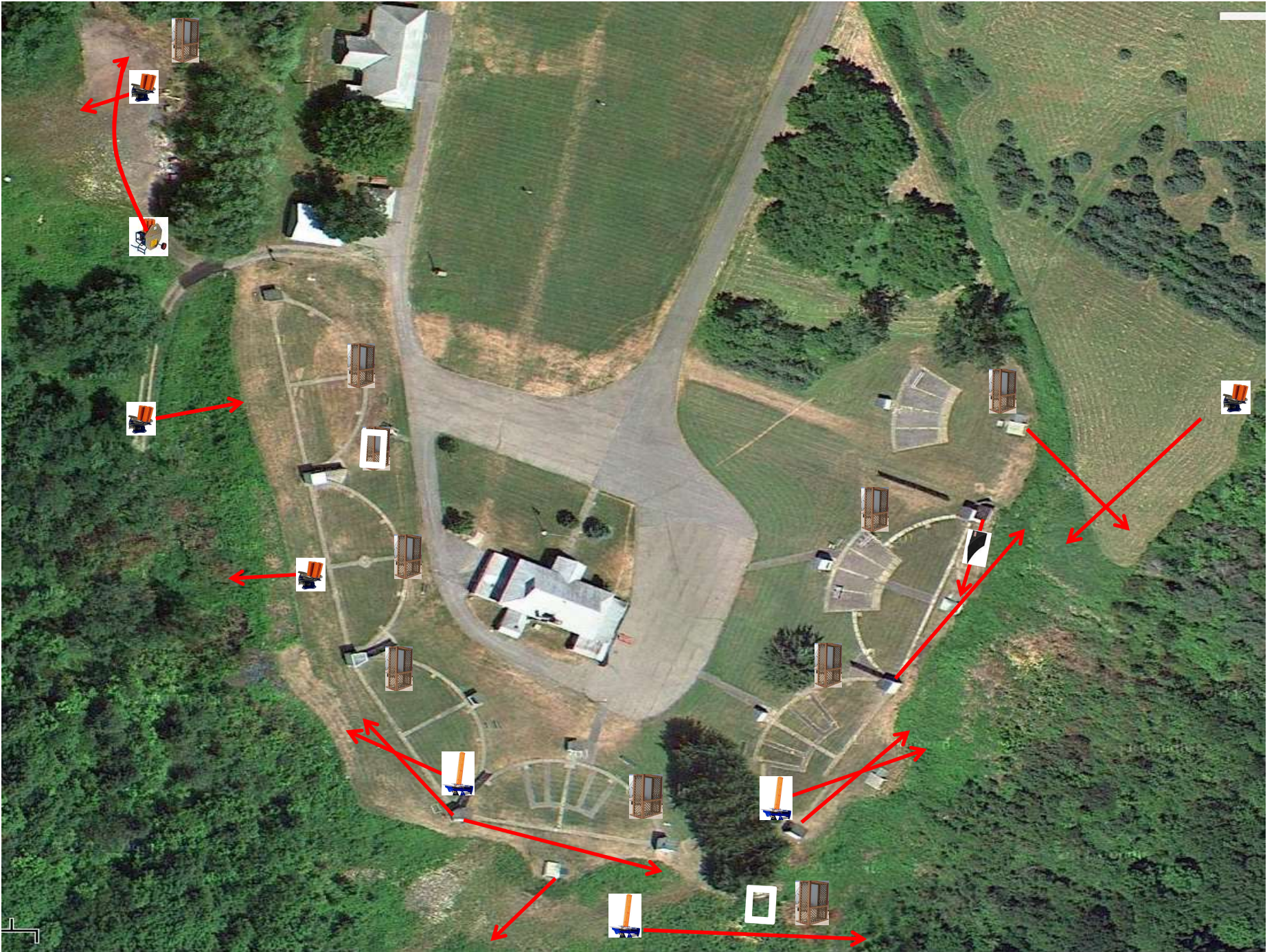
3 Simo Pair (6)

Promatic (Teal) and **Chondel**

****Note;** The Chondel should be very slow and very low
The Promatic should be as High as it can go

The Pit





The Menu

11/21/2015

- | | | | |
|-------------|---------------------------|---|-----|
| 1) Trap | - 3 Simo Pair | - Trap House and Promatic | (6) |
| 2) 5-Stand | - 2 Report Pair | - Rabbit then Low House | (4) |
| 3) Skeet #2 | - 3 Simo Pair | - Low House and Automatic | (6) |
| 4) Gallows | - 2 Following Pair | - Automatic then Automatic
(Hold the Button Down) | (4) |
| 5) Skeet #3 | - 3 Simo Pair | - Trap House and Low House | (6) |
| 6) Skeet #4 | - 3 Simo Pair | - High House and Automatic | (6) |
| 7) Skeet #5 | - 3 Simo Pair | - Automatic and Low House | (6) |
| 8) Skeet #6 | - 3 Report Pair | - Promatic then Promatic | (6) |
| 9) The Pit | - 3 Simo Pair | - Promatic and Chondel | (6) |

(50)