

3 Boxes of Targets  
3 Report Pair (6)  
**Automatic** then Manual

# Field



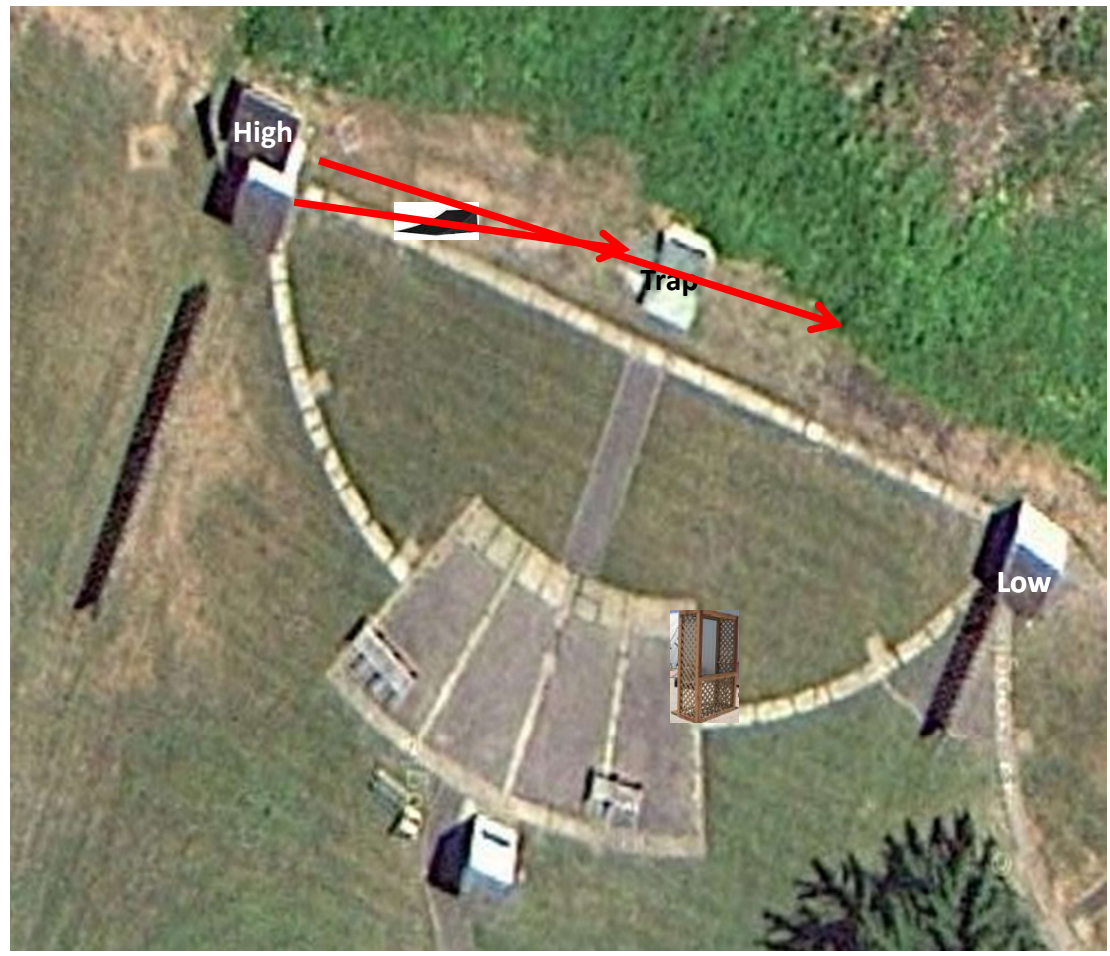
3 Boxes of Targets  
3 Simo Pair (6)  
Trap House  
and **Blue** Promatic  
(Remote)

# Trap Field



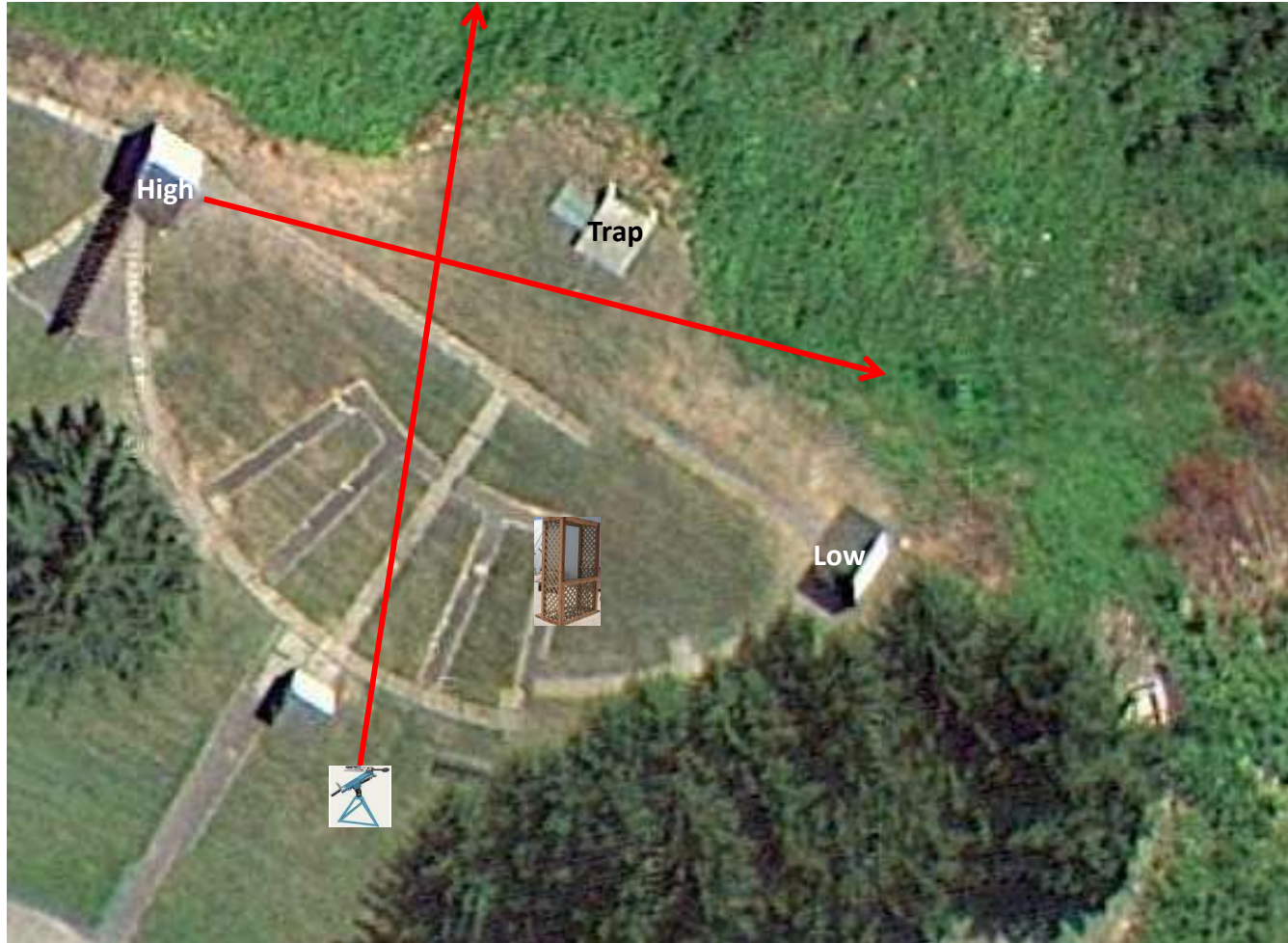
2 Boxes of Targets  
2 Report Pair (4)  
Rabbit then High House

# 5-Stand



2 Boxes of Targets  
2 Simo Pair (4)  
Manual and High House

# Skeet 2



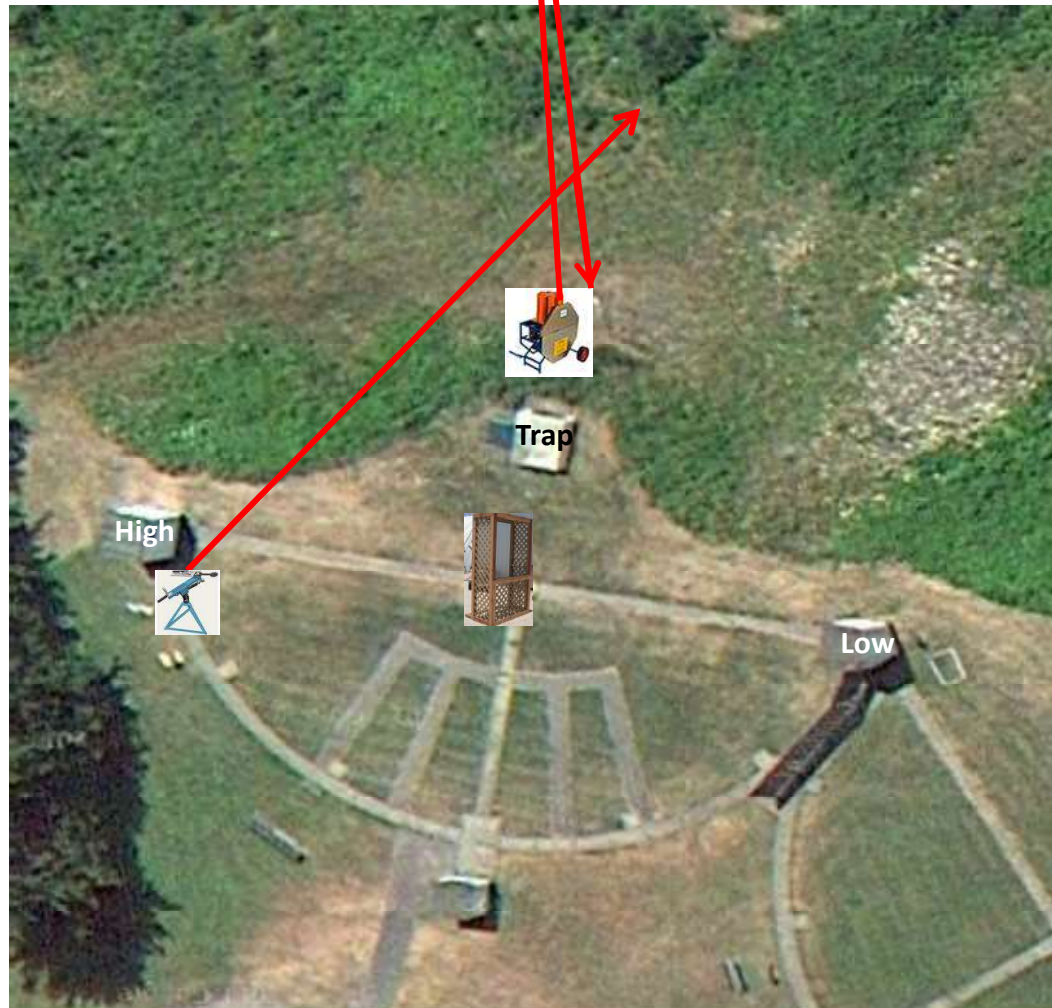
2 Boxes of Targets  
2 Simo Pair (4)  
Manual  
**(On Gallows)**

# Gallows



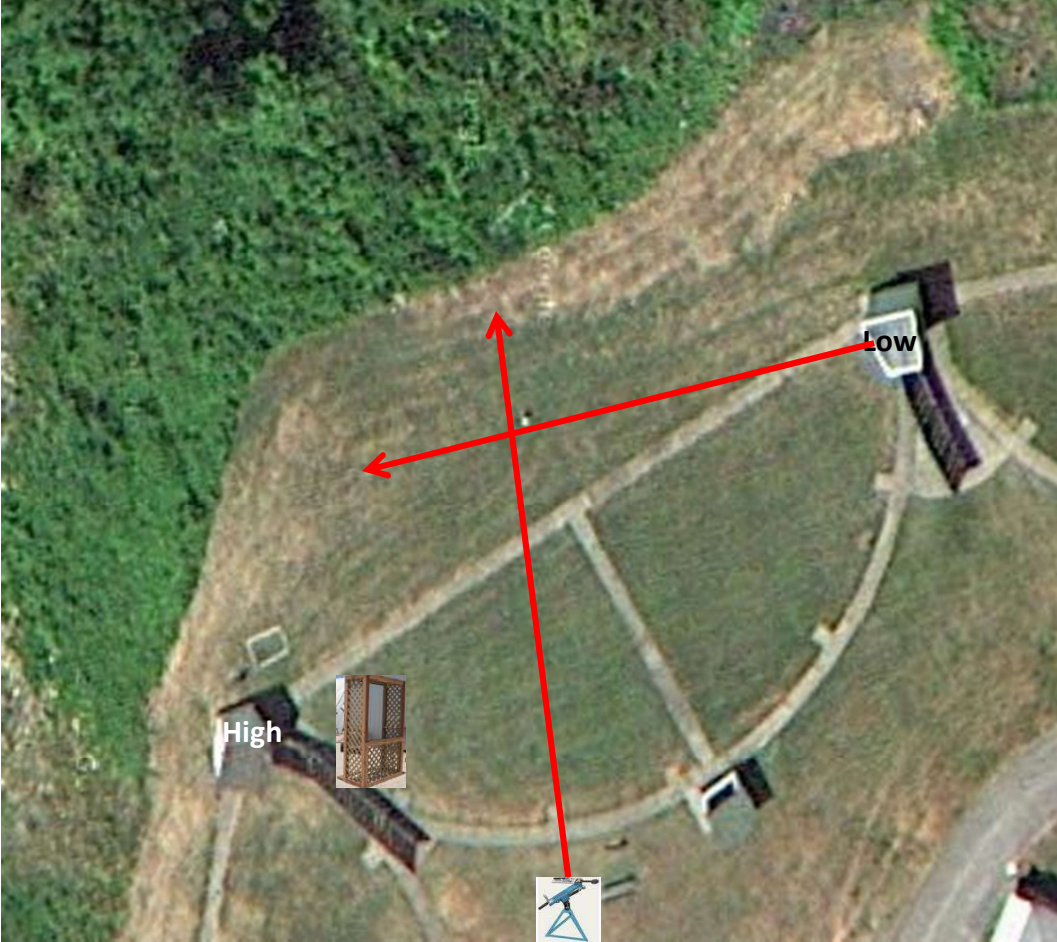
# Skeet 3

3 Boxes of Targets  
3 Report Pair (6)  
Manual then Chondel  
(Chondel Straight Up on Edge)



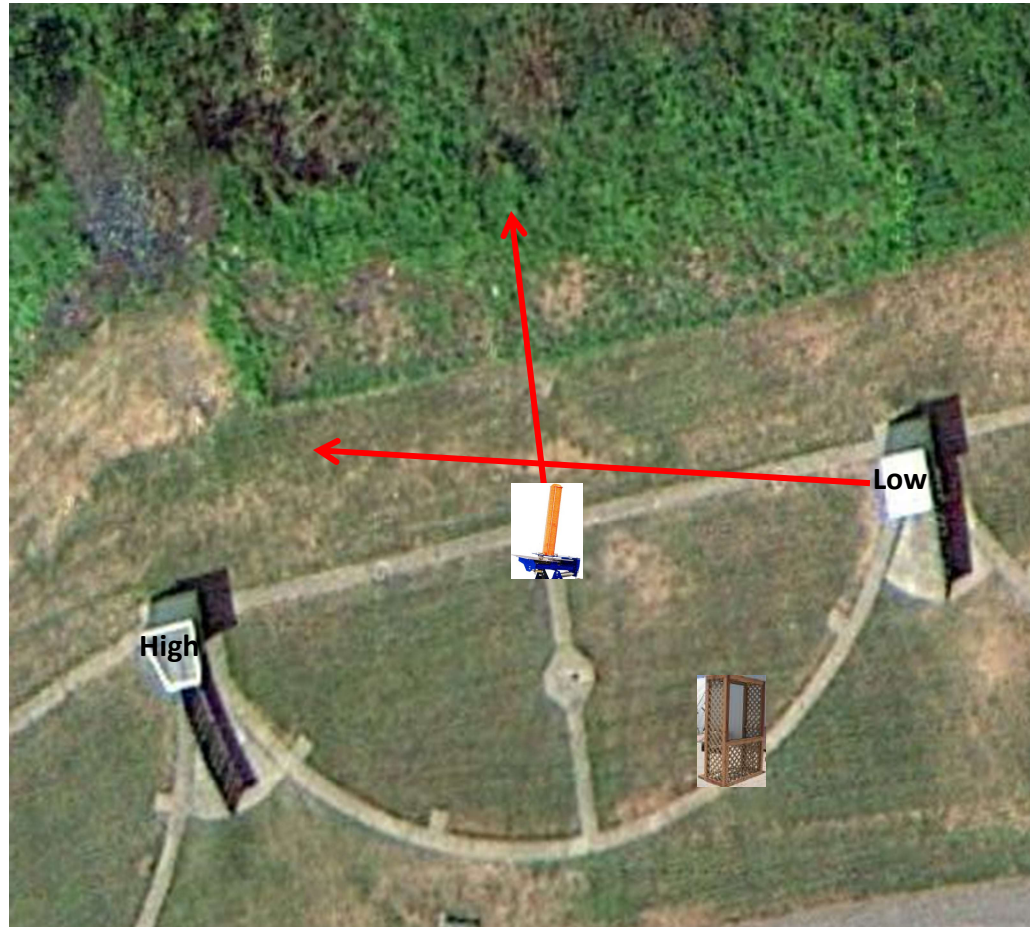
2 Boxes of Targets  
2 Simo Pair (4)  
Manual and Low House

# Skeet 4



3 Boxes of Targets  
3 Report Pair (6)  
Low House then Automatic

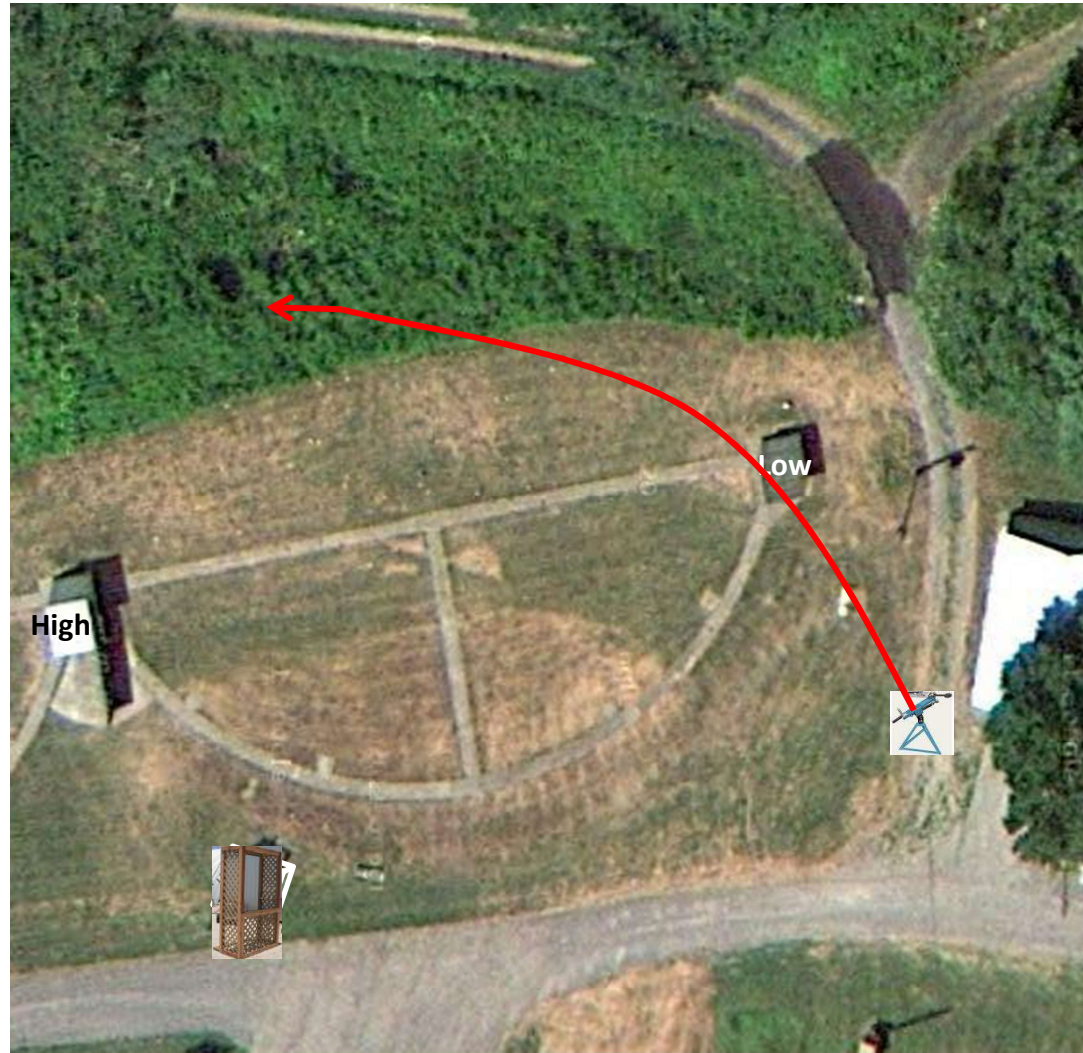
# Skeet 5





2 Boxes of Targets  
2 Report Pair (4)  
Manual (Tippy) then Manual (Tippy)  
**(On Mini-Gallows)**

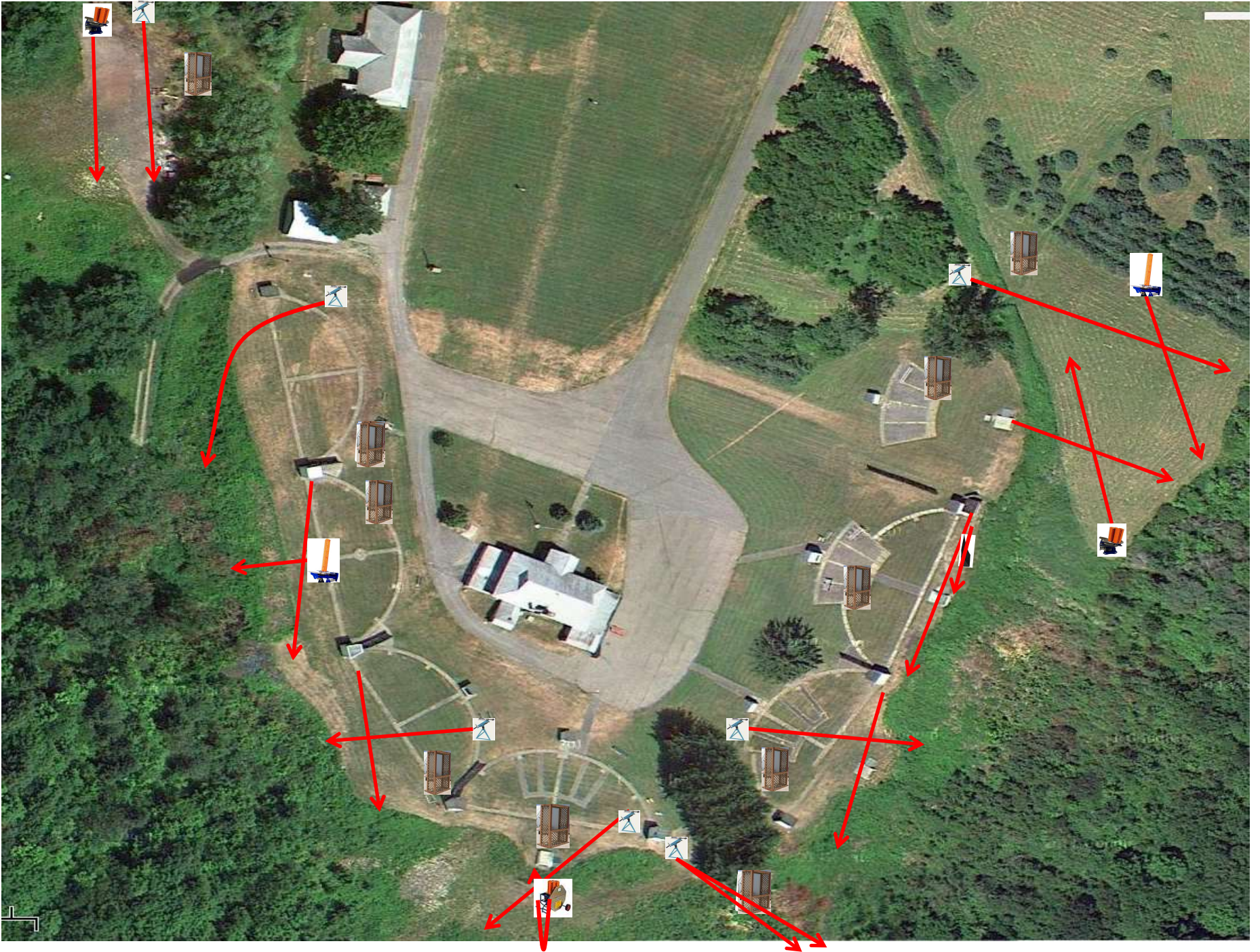
# Skeet 6



3 Boxes of Targets  
3 Report Pair (6)  
Manual then **Blue** Promatic

# The Pit





# The Menu

## 10/24/2015

1) Field	- 3 Report Pair	- Automatic then Manual	(6)
2) Trap	- 3 Simo Pair	- Trap House and Blue Promatic	(6)
3) 5-Stand	- 2 Report Pair	- Rabbit then High House	(4)
4) Skeet #2	- 2 Simo Pair	- Manual and High House	(4)
5) Gallows	- 2 Simo Pair	- Manual	(4)
6) Skeet #3	- 3 Report Pair	- Manual and Chondel Promatic	(6)
7) Skeet #4	- 2 Simo Pair	- Manual and Low House	(4)
8) Skeet #5	- 3 Report Pair	- Low House then Automatic	(6)
9) Skeet #6	- 2 Report Pair	- Manual then Manual	(4)
10) The Pit	- 3 Report Pair	- Manual then Blue Promatic	(6)
		-----	
			(50)