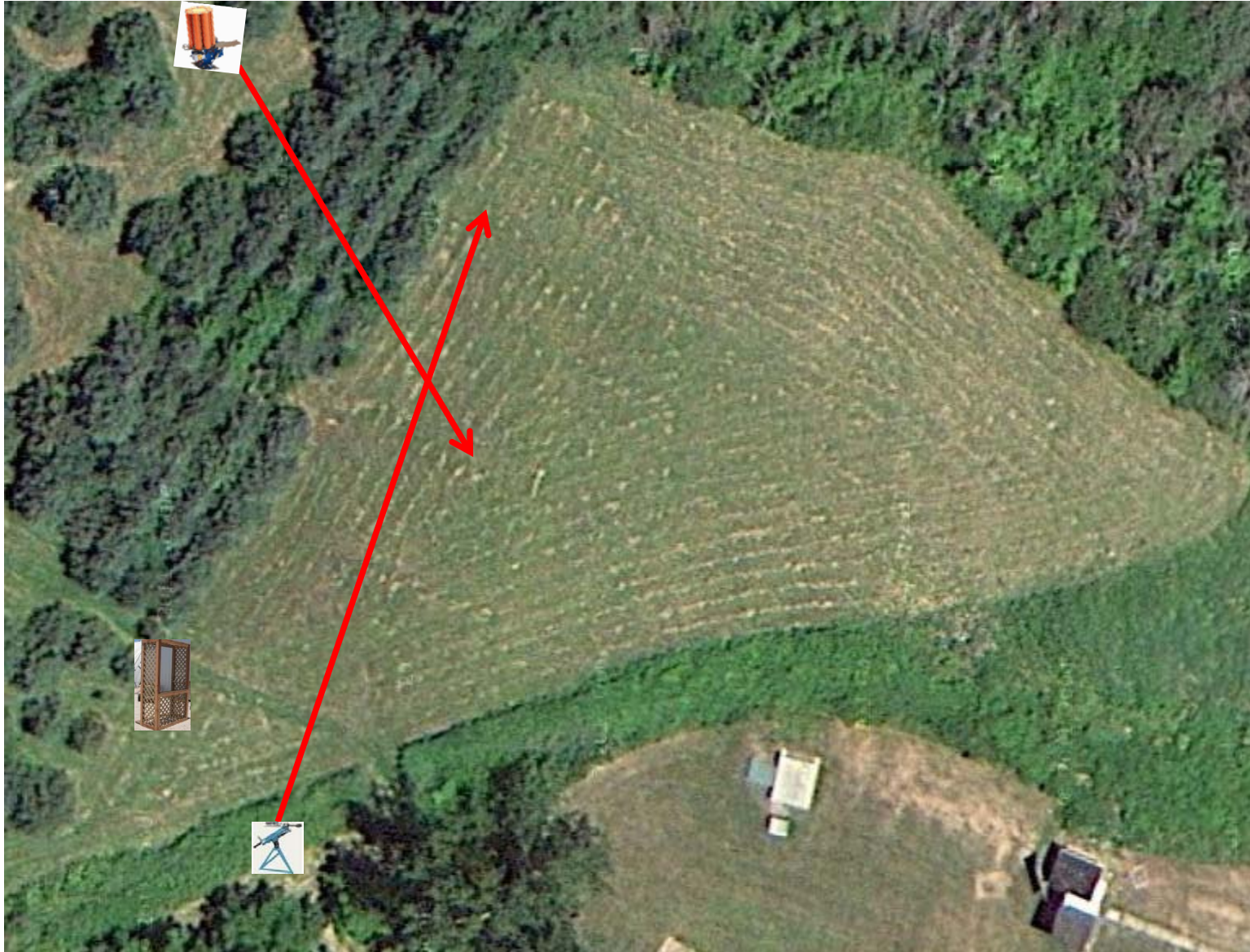


3 Boxes of Targets
3 Simo Pair (6)
Manual and Automatic

Field



2 Boxes of Targets
2 Report Pair (4)
Trap House then Automatic

Trap Field



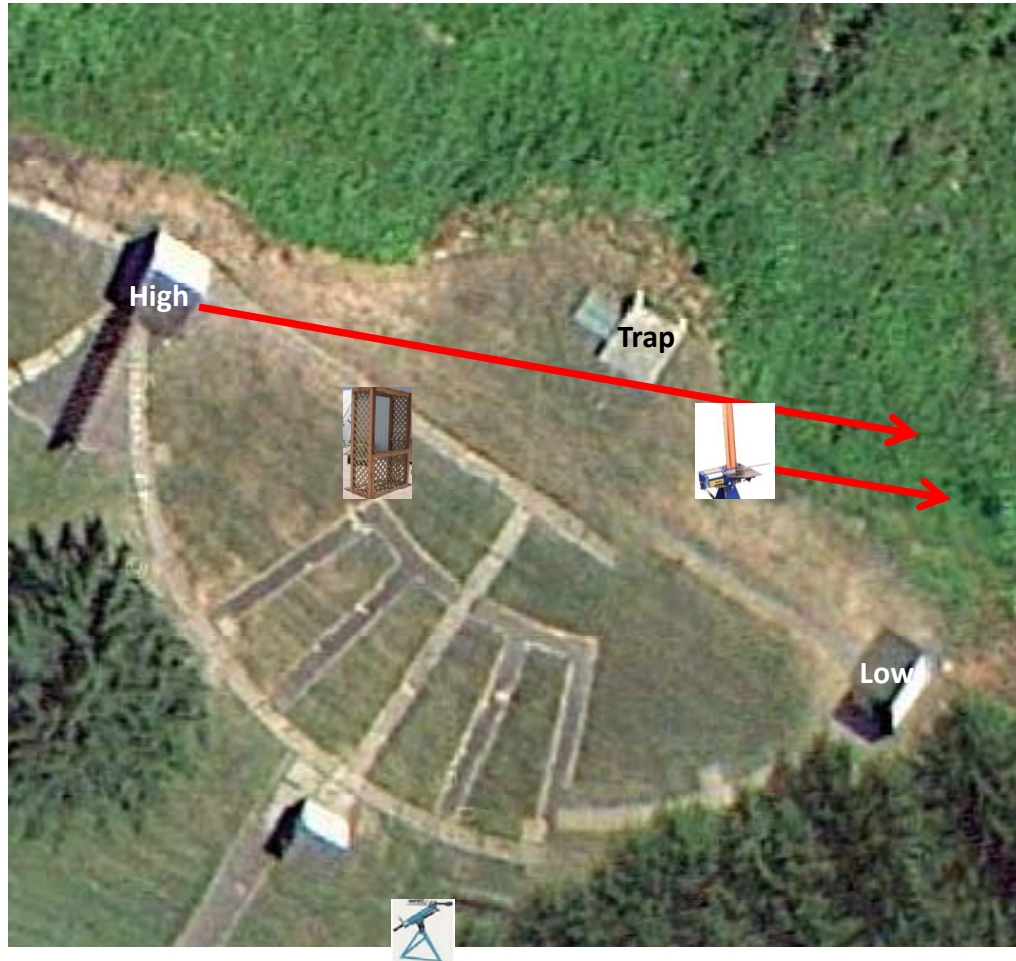
3 Boxes of Targets
3 Simo Pair (6)
High House and Teal (Old Promatic)

5-Stand



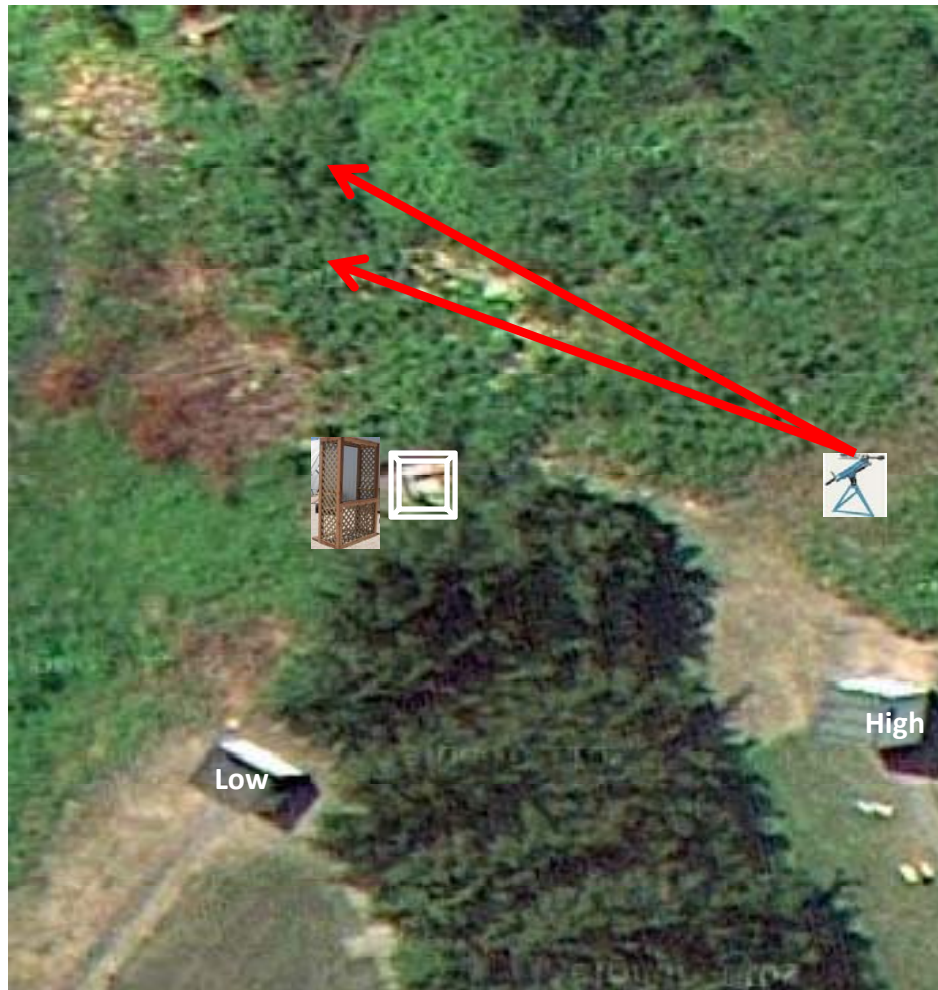
2 Boxes of Targets
2 Report Pair (4)
High House then Automatic

Skeet 2



2 Boxes of Targets
2 Simo Pair (4)
Manual (Teal)

Gallows



3 Boxes of Targets
3 Report Pair (6)
Trap House then Old Rabbit (Chondel)

Skeet 3



2 Boxes of Targets
2 Report Pair (4)
Manual then Low House

Skeet 4



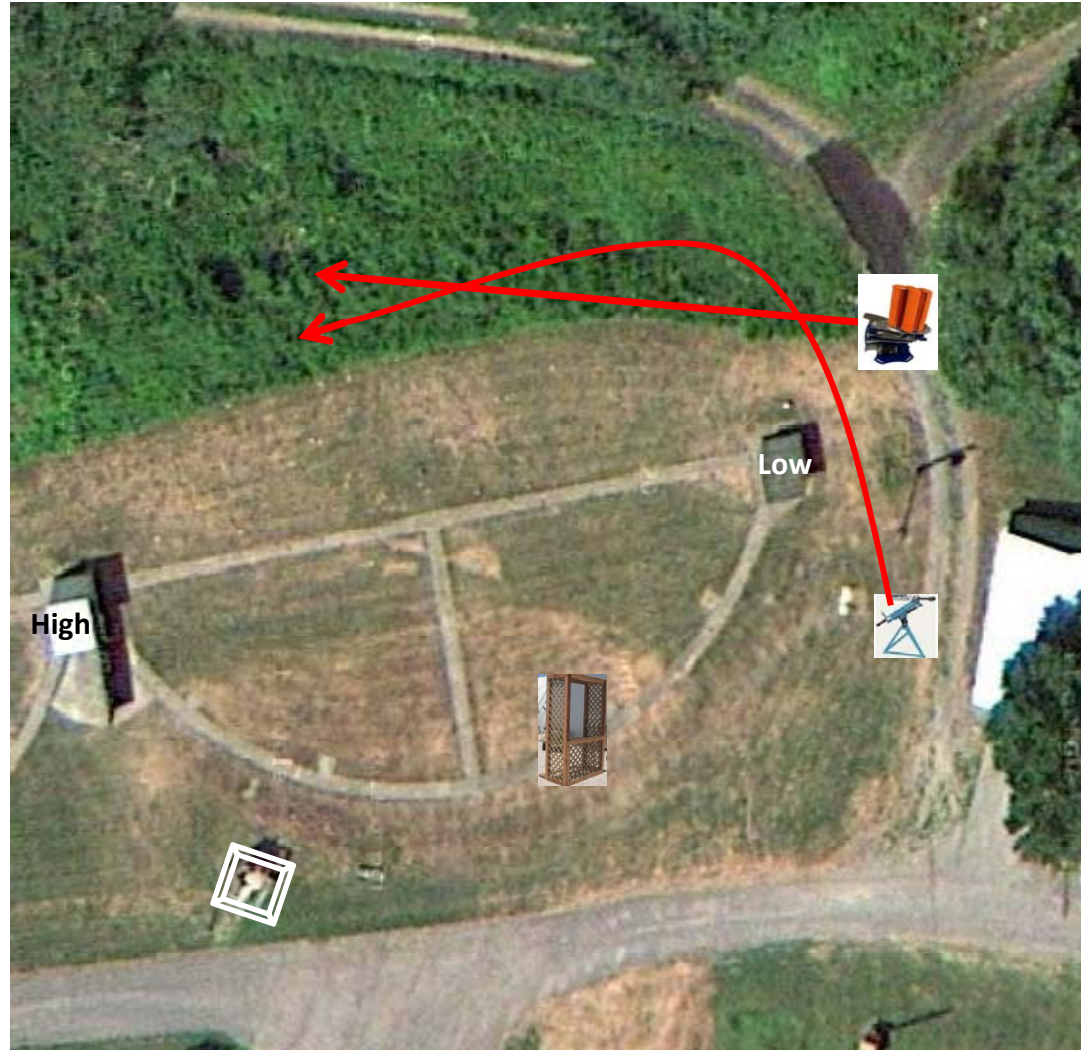
2 Boxes of Targets
2 Report Pair (4)
Manual then High House

Skeet 5



3 Boxes of Targets
3 Report Pair (6)
Manual – Battue (Tippy) then **Blue** Promatic

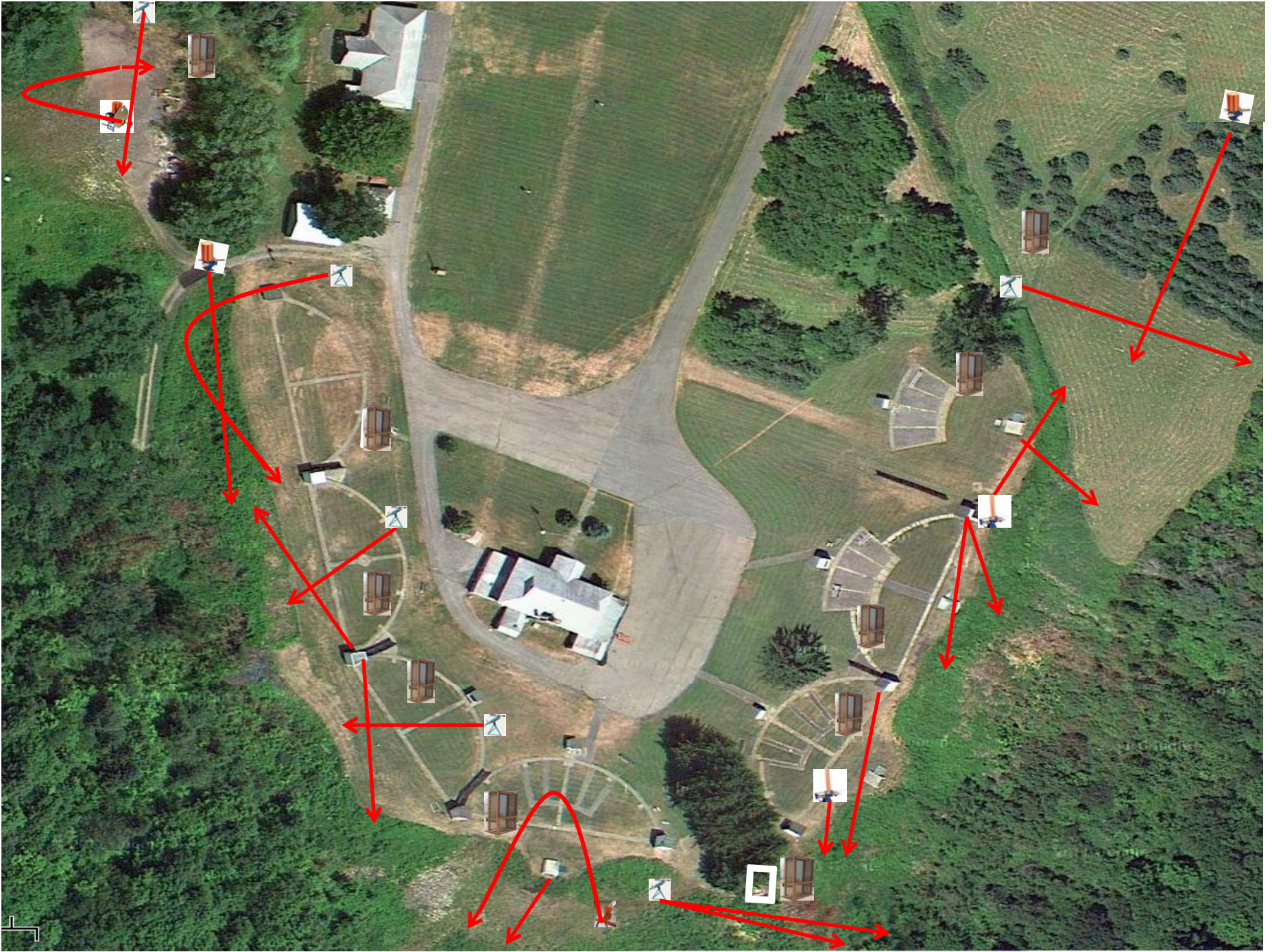
Skeet 6



3 Boxes of Targets
3 Report Pair (6)
Manual then Chondel

The Pit





The Menu

11/22/2014

1) Field	- 3 Simo Pair	- Manual and Blue Promatic	(6)
2) Trap	- 2 Report Pair	- Trap House then Automatic	(4)
3) 5-Stand	- 3 Simo Pair	- High House and Teal (Old Promatic)	(6)
4) Skeet #2	- 2 Report Pair	- High House then Automatic	(4)
5) Gallows	- 2 Simo Pair	- Manual	(4)
6) Skeet #3	- 3 Report Pair	- Trap House then Old Rabbit (Chondel)	(6)
7) Skeet #4	- 2 Report Pair	- Manual then Low House	(4)
8) Skeet #5	- 2 Report Pair	- Manual then High House	(4)
9) Skeet #6	- 3 Report Pair	- Manual (Battue) then Blue Promatic	(6)
10) The Pit	- 3 Report Pair	- Manual then Chondel	(6)

			(50)