

3 Boxes of Targets  
3 Report Pair (6)  
Manual then Automatic

# Field



2 Boxes of Targets  
2 Report Pair (4)  
Manual then Trap House

# Trap Field





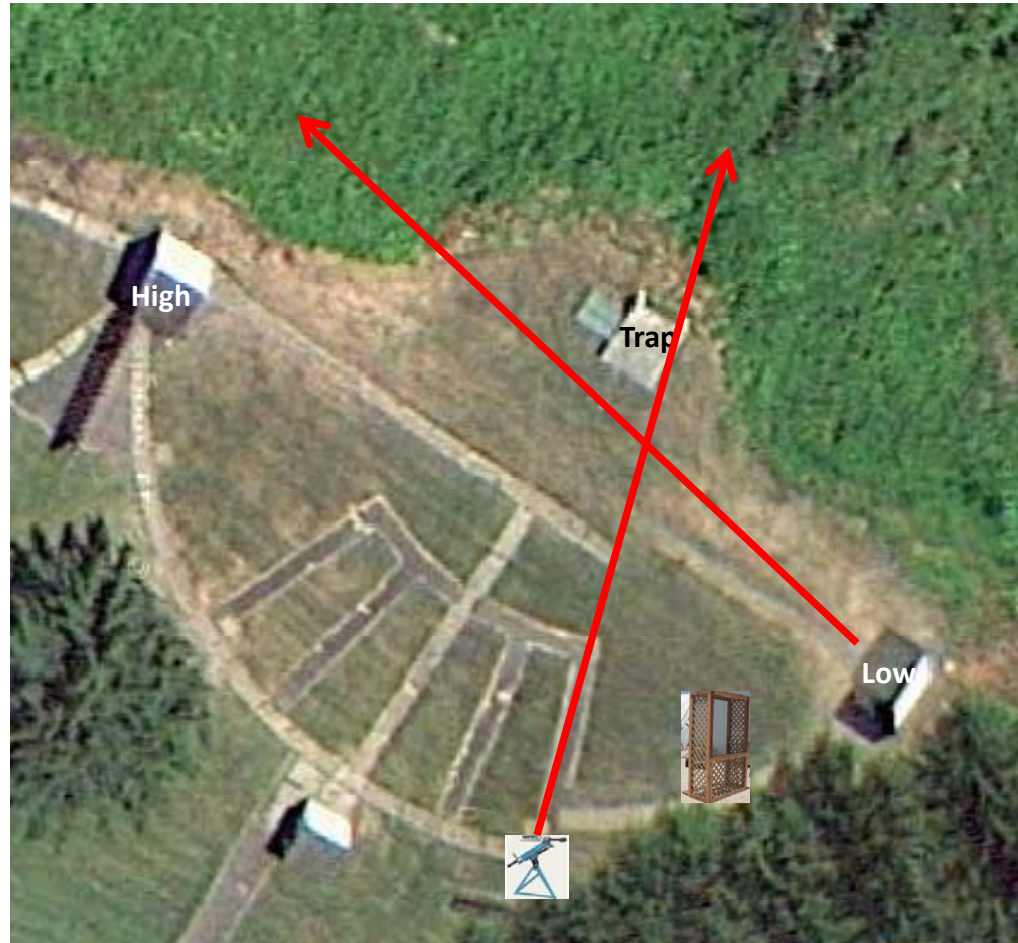
3 Boxes of Targets  
3 Simo Pair (6)  
Low House and Old Promatic

# 5-Stand



# Skeet 2

2 Boxes of Targets  
2 Report Pair (4)  
Low House then Manual  
**The manual should cross the shooters face pretty close**



# Gallows

2 Boxes of Targets

2 Simo Pair (4)

Manual

**Same as the 3-bird shoot but only 2 targets**





3 Boxes of Targets  
3 Simo Pair (6)  
Manual (Teal) and **Blue** Promatic  
**Both teals but the promatic should come under and through the manual trap**

# Skeet 3



2 Boxes of Targets  
2 Report Pair (4)  
High House then Automatic  
Cage facing High House  
**Watch the automatic doesn't interfere with Skeet #3**

# Skeet 4



# Skeet 5

2 Boxes of Targets

2 Report Pair (4)

Low House then Automatic

Cage facing Low House

**Watch the automatic doesn't interfere with Skeet #6**





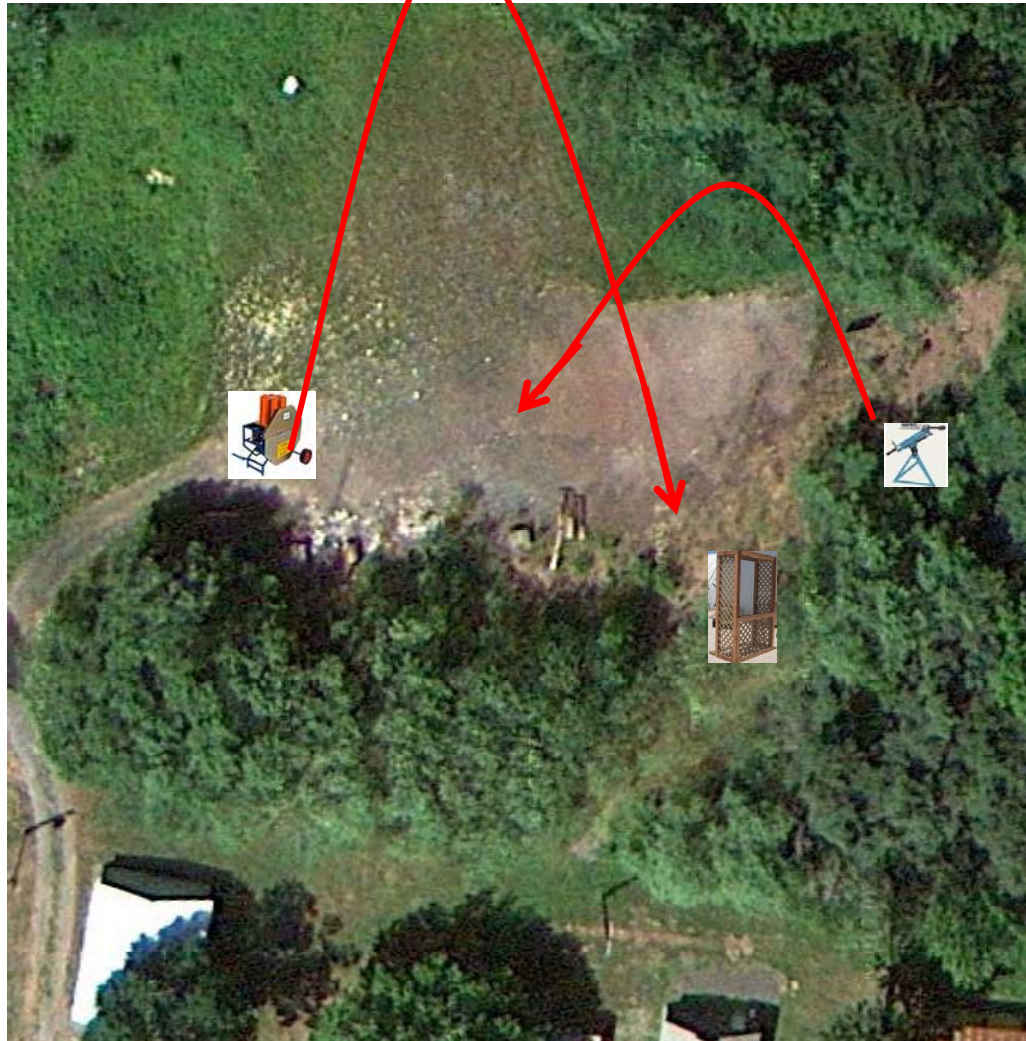
3 Boxes of Targets  
3 Simo Pair (6)  
Manual and **Blue** Promatic

# Skeet 6

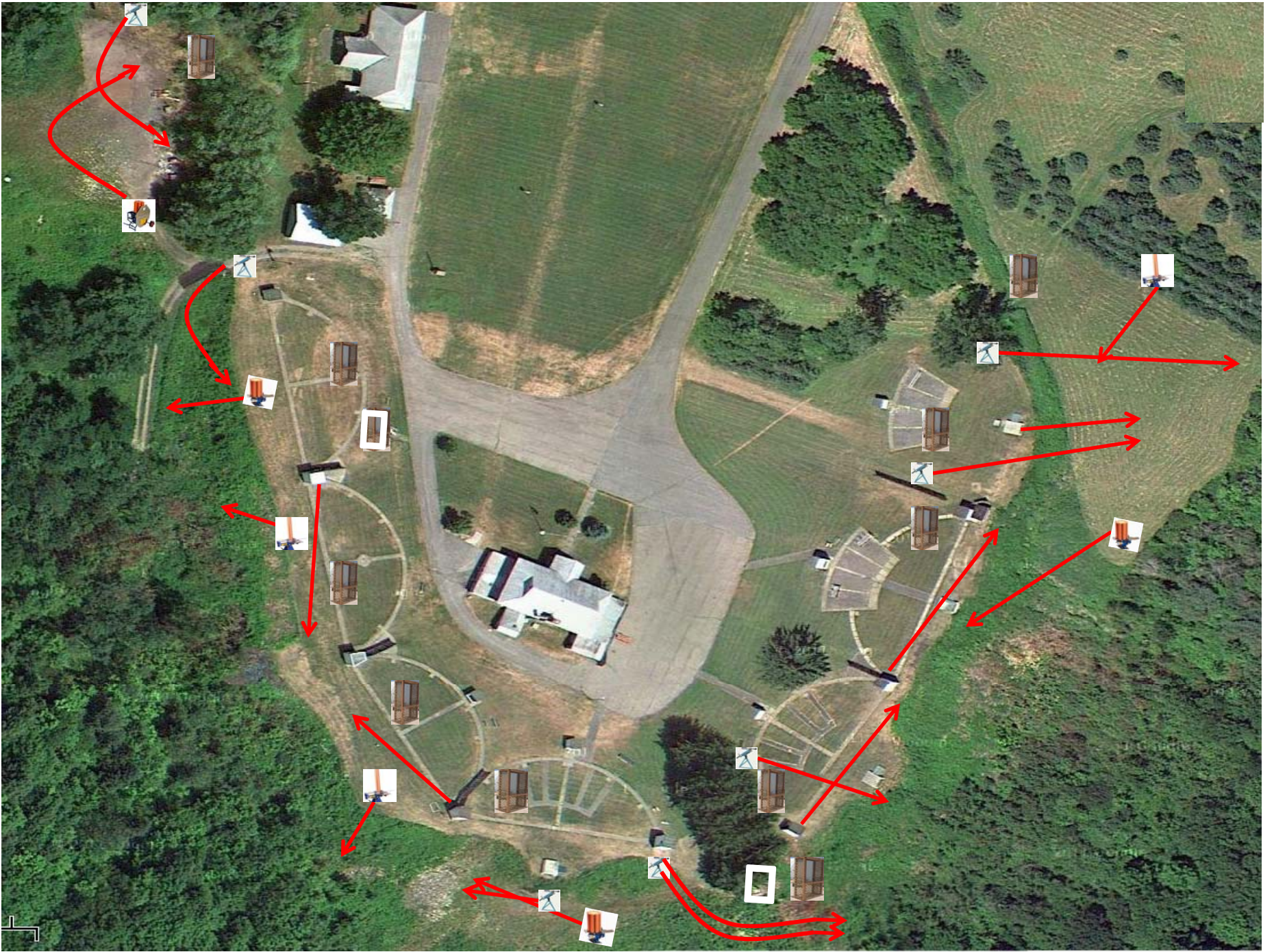


3 Boxes of Targets  
3 Simo Pair (6)  
Manual and Chondel  
**Manual should be half as high as the Chondel**

# The Pit









# The Menu – 10/18/2014

1) Field	- 3 Report Pair	- Manual then Automatic	(6)
2) Trap	- 2 Report Pair	- Manual then Trap House	(4)
3) 5-Stand	- 3 Simo Pair	- Low House and <b>Old</b> Promatic	(6)
4) Skeet #2	- 2 Report Pair	- <b>Low House</b> then Manual	(4)
5) Gallows	- 2 Simo Pair	- Manual (Tippy)	(4)
6) Skeet #3	- 3 Simo Pair	- Manual (Teal) and <b>Blue</b> Promatic	(6)
7) Skeet #4	- 2 Report Pair	- High House then Automatic	(4)
8) Skeet #5	- 2 Report Pair	- Low House then Automatic	(4)
9) Skeet #6	- 3 Simo Pair	- Manual and <b>Blue</b> Promatic	(6)
10) The Pit	- 3 Simo Pair	- Manual (Tippy) and Chondel	(6)
			-----
			(50)