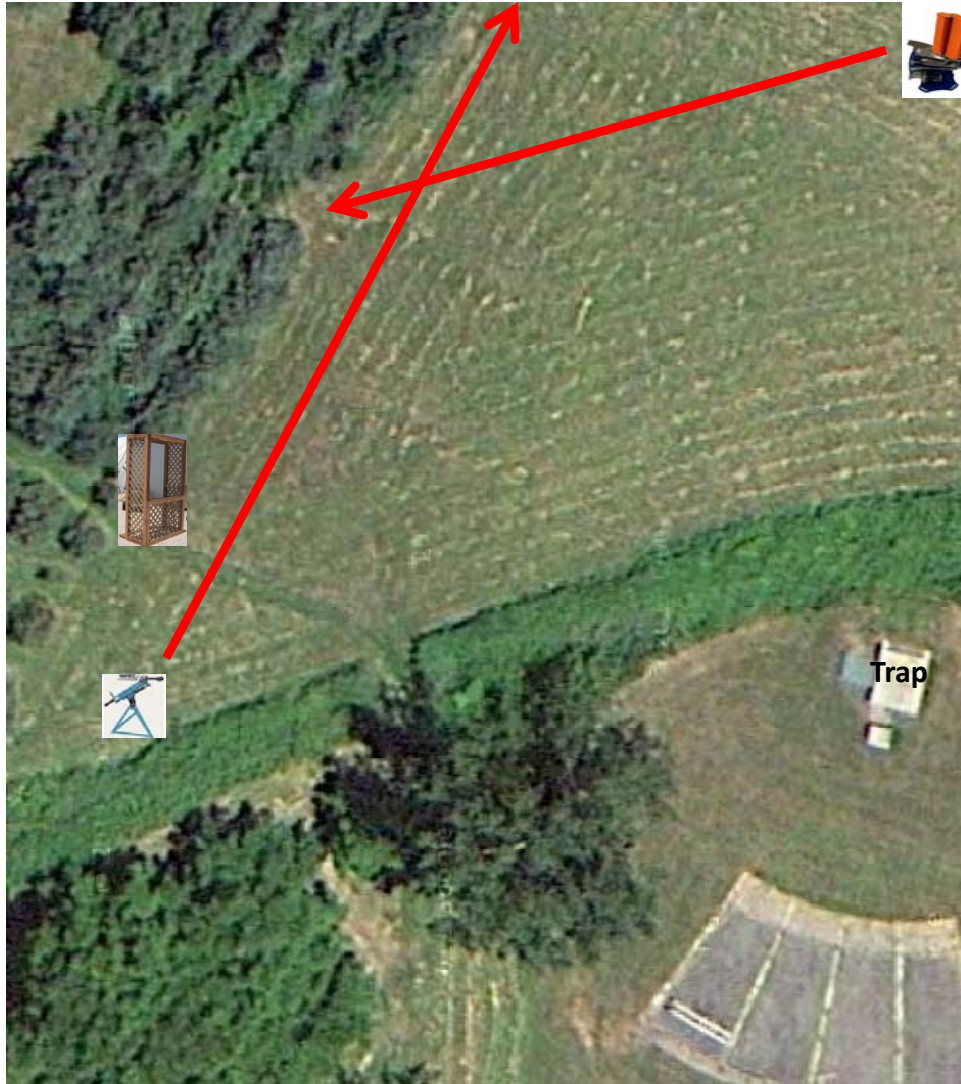


# Field

4 Boxes of Targets  
3 Report Pair (6)  
Manual then **Blue** Promatic



# Trap Field

4 Boxes of Targets  
3 Report Pair (6)  
Manual then Automatic



# 5-Stand

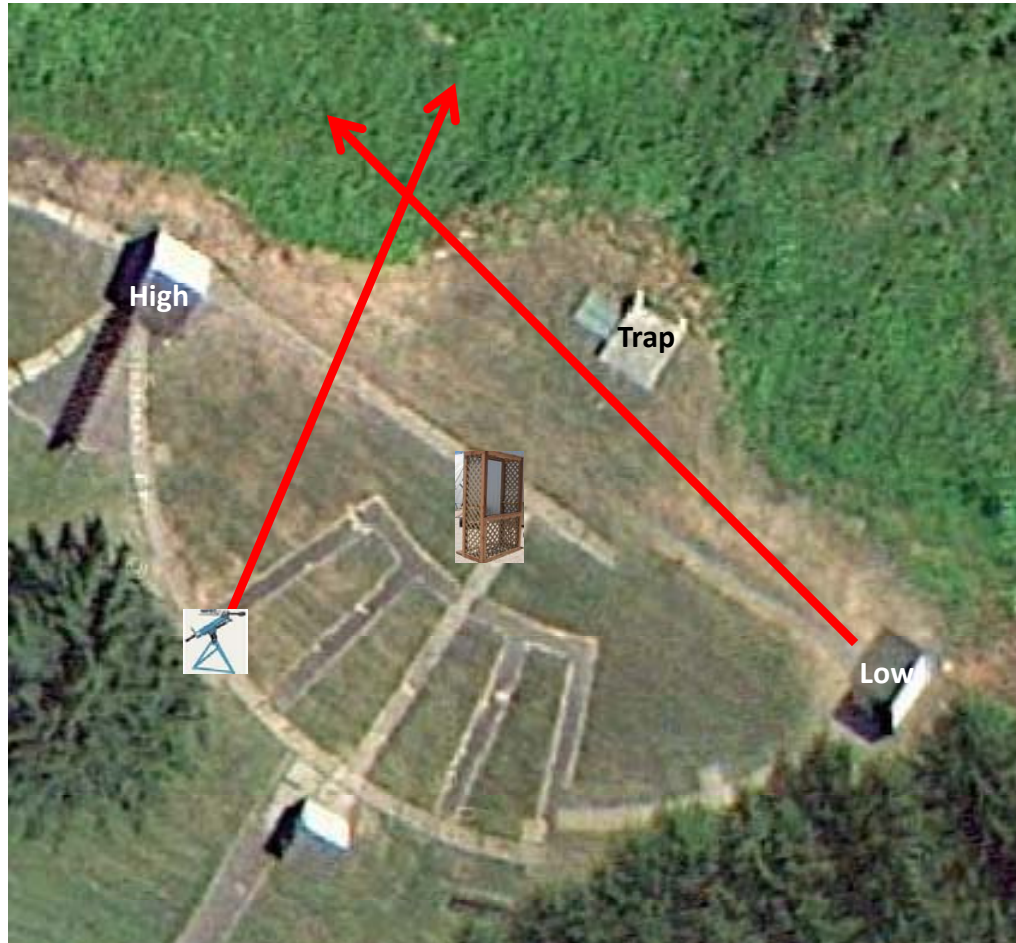
3 Boxes of Targets  
2 Report Pair (4)  
Low House then Trap House





# Skeet 2

3 Boxes of Targets  
2 True Pair (4)  
Manual and Low House



# Gallows

3 Boxes of Targets  
2 True Pair (4)  
Manual



# Skeet 3

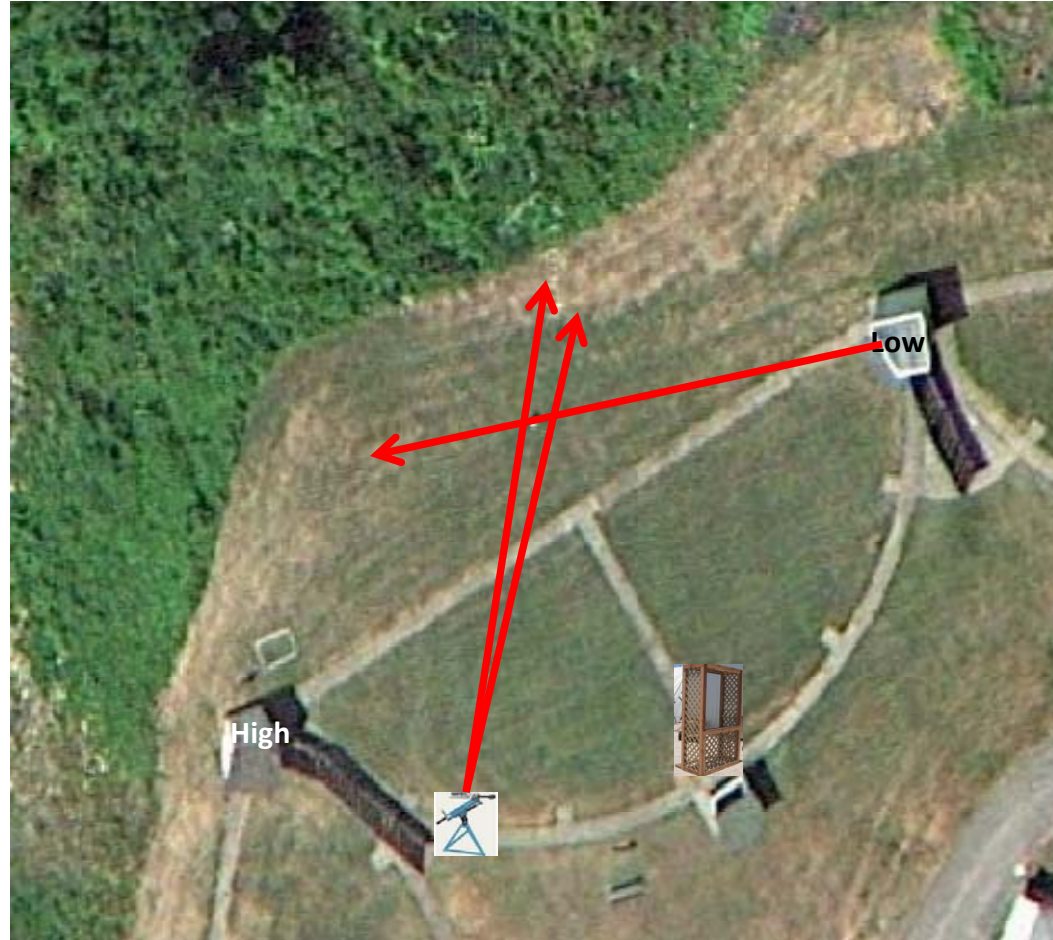
4 Boxes of Targets  
3 True Pair (6)  
Manual and **Old** Promatic





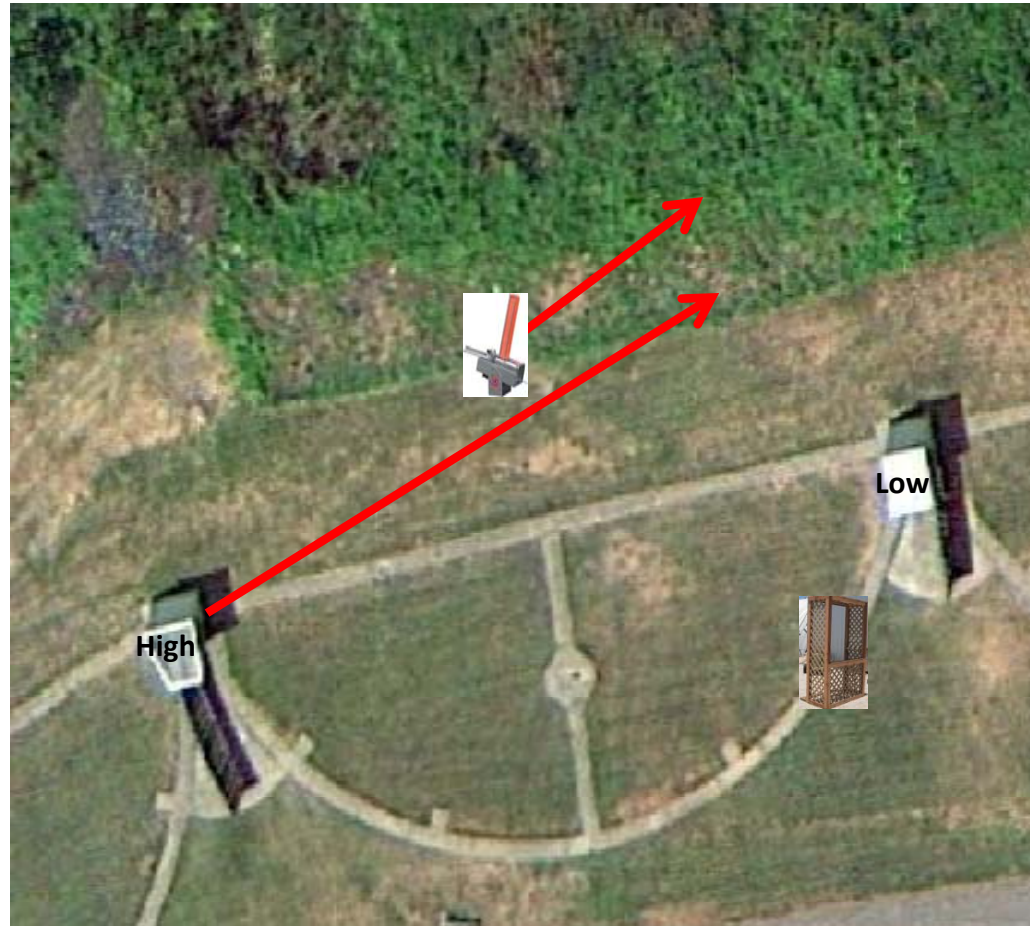
# Skeet 4

4 Boxes of Targets  
2 – 3-Flush (4)(+2)  
Manual (2 Targets) and Low House



# Skeet 5

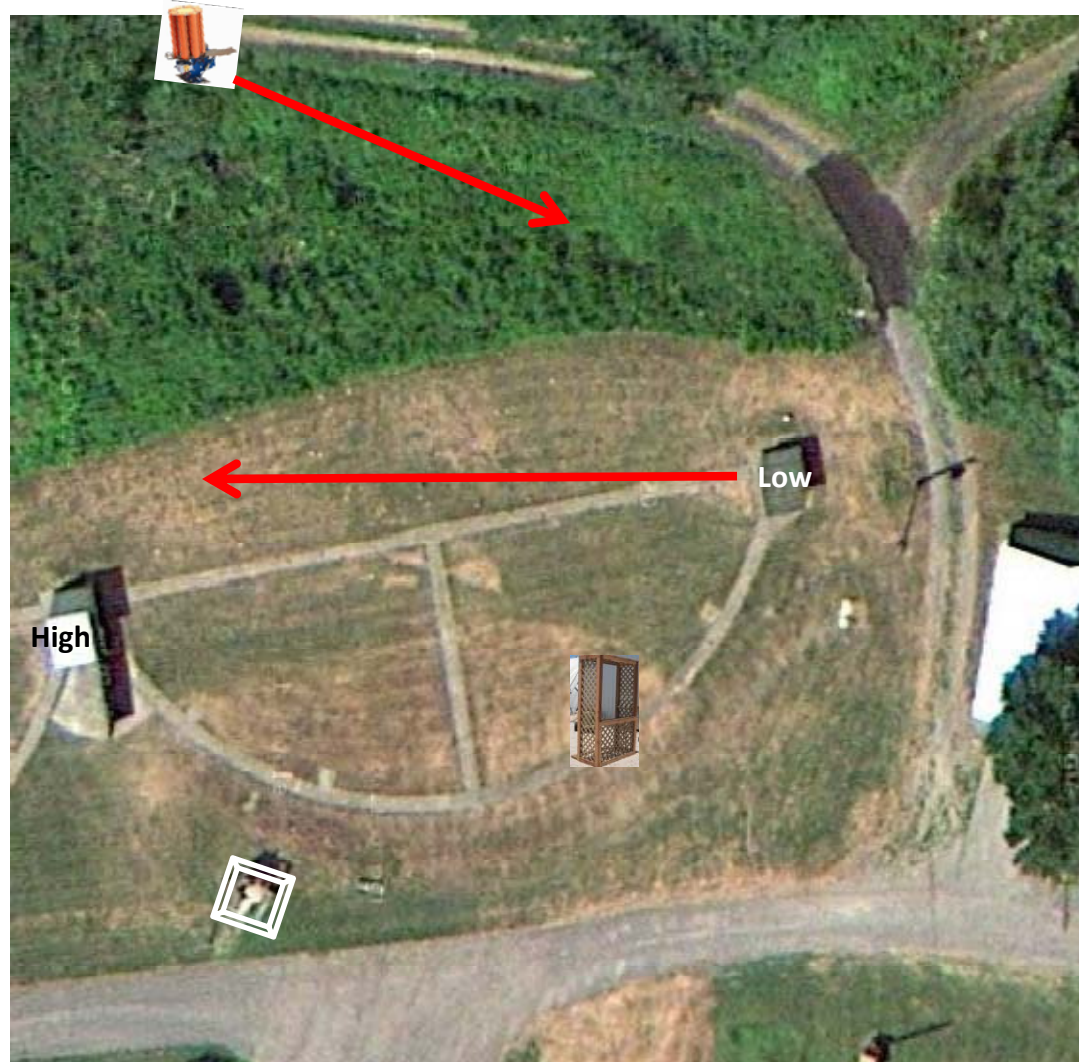
4 Boxes of Targets  
3 Report Pair (6)  
Automatic then High House





# Skeet 6

4 Boxes of Targets  
3 True Pair (6)  
Low House and **Blue** Promatic

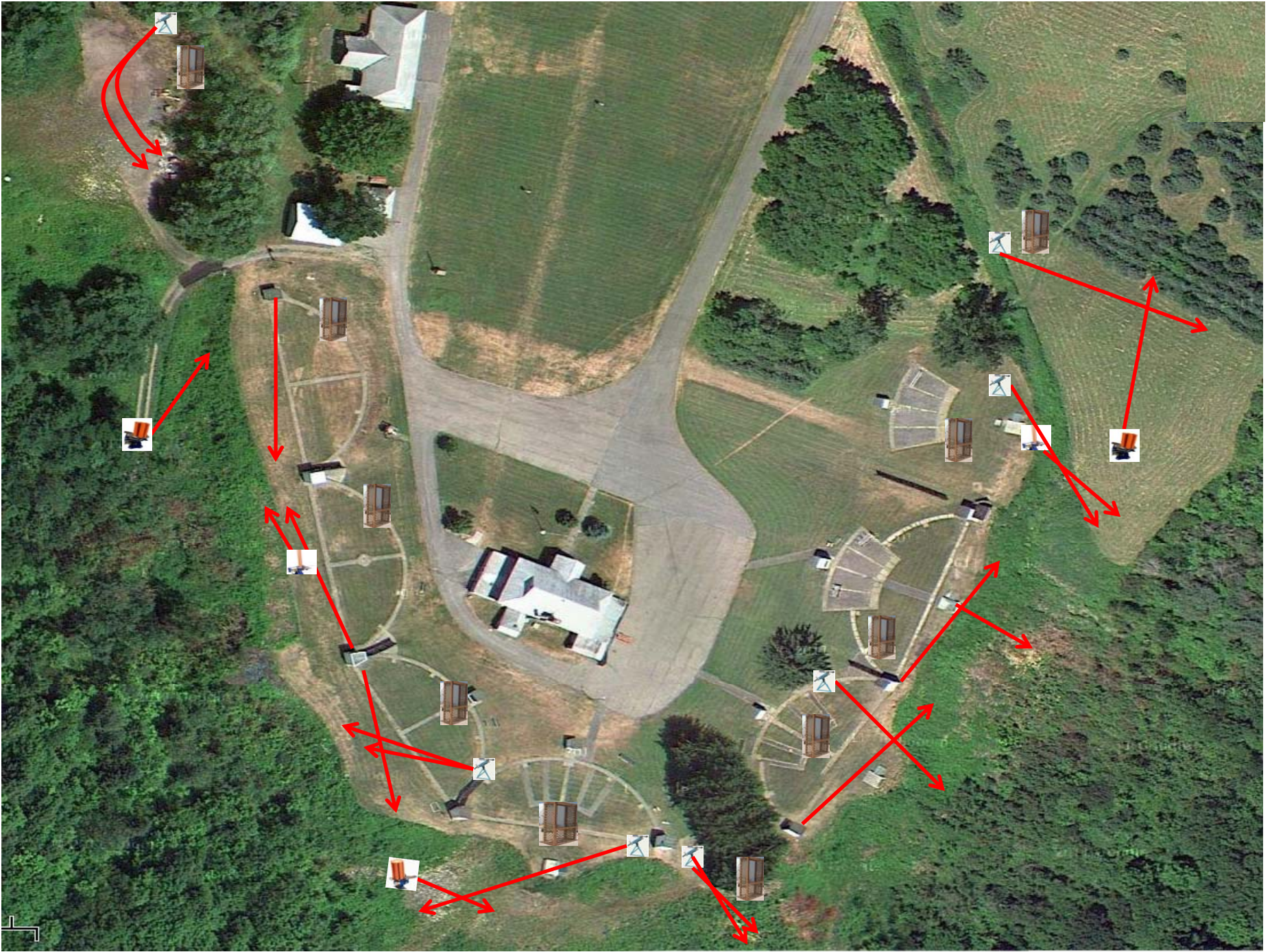


# The Pit

- 2 Boxes of Targets Standard
- 1 Box Battues
- 2 True Pair (4)
- Manual (Std, Battue)









# The Menu – 11/23/2013

- 1) Field - 3 Report Pair - Manual then Blue Promatic (6)
- 2) Trap - 3 Report Pair - Manual then Automatic (6)
- 3) 5-Stand - 2 Report Pair - Low House then Trap House (4)
- 4) Skeet #2 - 2 True Pair - Manual and Low House (4)
- 5) Gallows - 2 True Pair - Manual (4)
- 6) Skeet #3 - 3 True Pair - Manual and Old Promatic (6)
- 7) Skeet #4 - 2 3-Flush - Manual (2 Std) and Low House (4)(+2)
- 8) Skeet #5 - 3 Report Pair - Automatic then High House (6)
- 9) Skeet #6 - 3 True Pair - Low House and Blue Promatic (6)
- 10) The Pit - 2 True Pair - Manual (Standard and Battue) (4)  
\*Battue Top Rail Black Side Up -----  
(50)(+2)