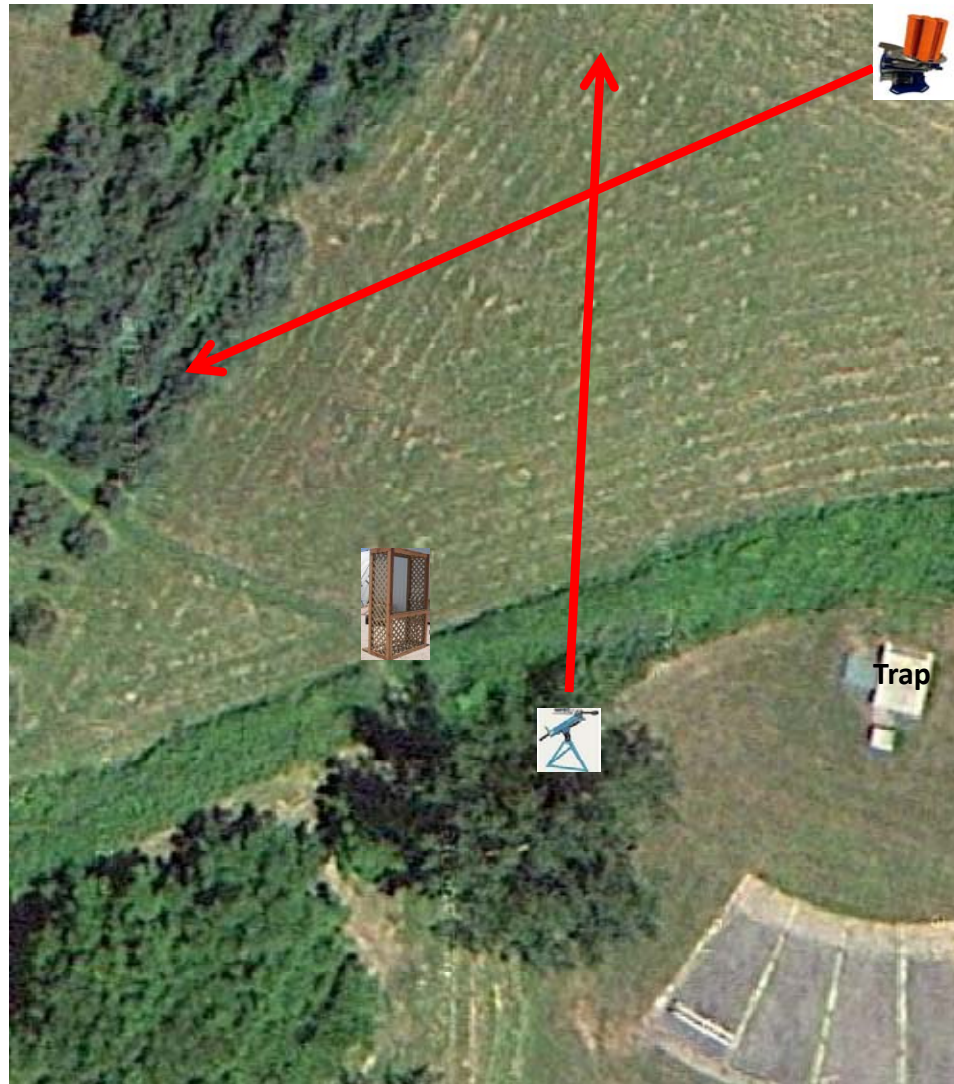


Field

4 Boxes of Targets
3 Report Pair (6)
Manual then **Blue** Promatic



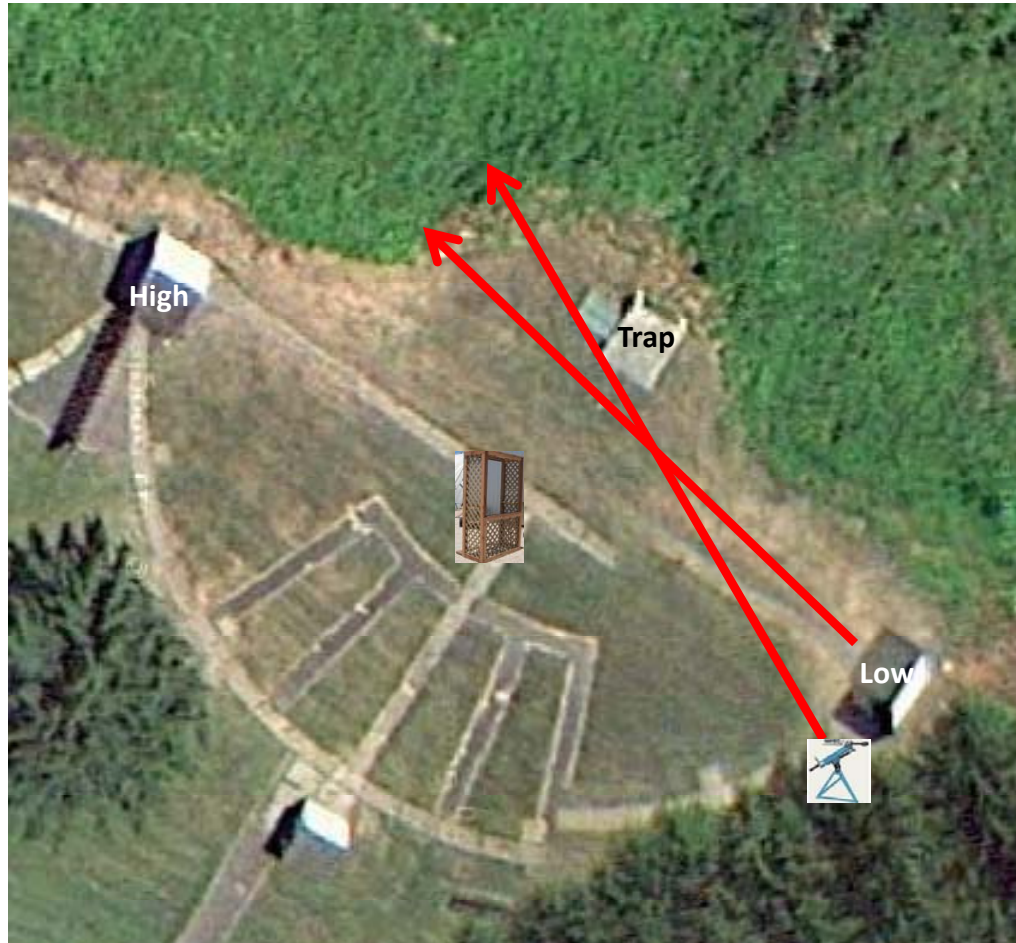
5-Stand

3 Boxes of Targets
2 Report Pair (4)
High House then Trap House



Skeet 2

3 Boxes of Targets
2 True Pair (4)
Manual and Low House



Gallows

3 Boxes of Targets
2 True Pair (4)
Manual



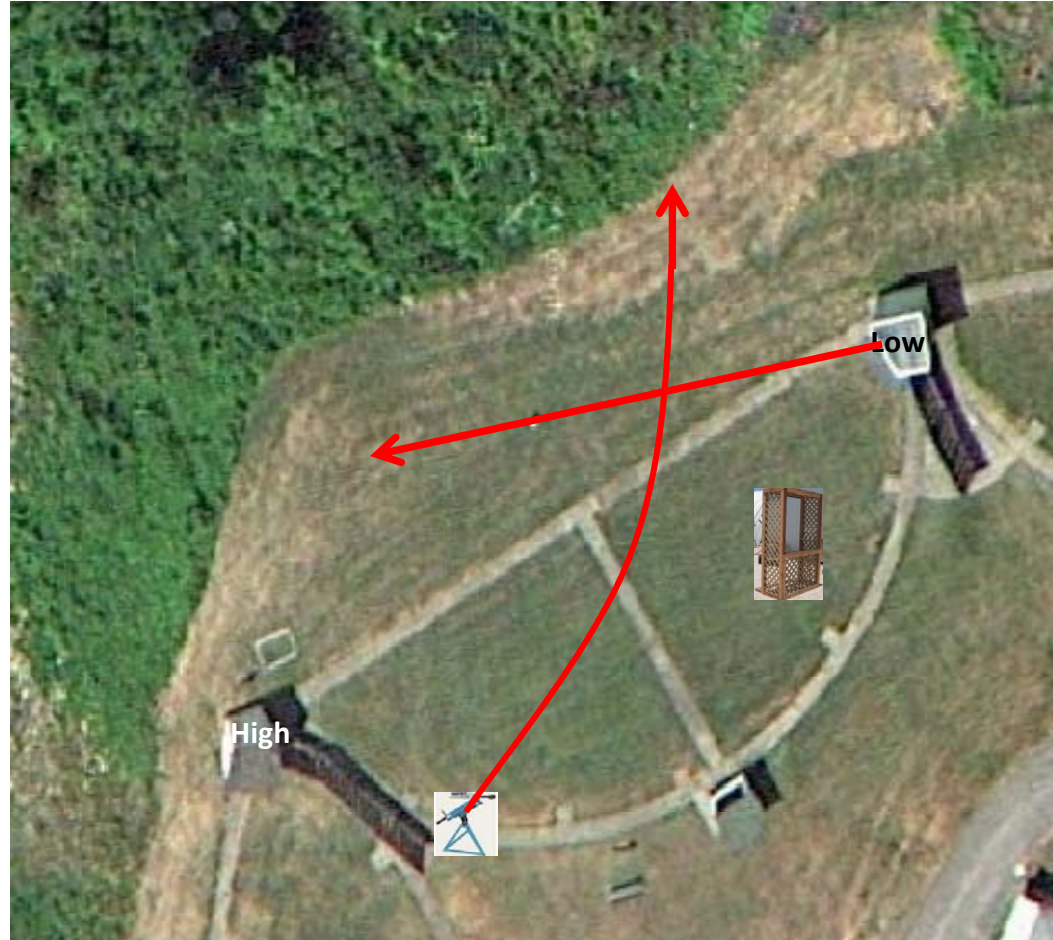
Skeet 3

4 Boxes of Targets
3 True Pair (6)
Manual and **Old** Promatic



Skeet 4

3 Boxes of Targets
2 Report Pair (4)
Manual (Tippy Trap) then Low House



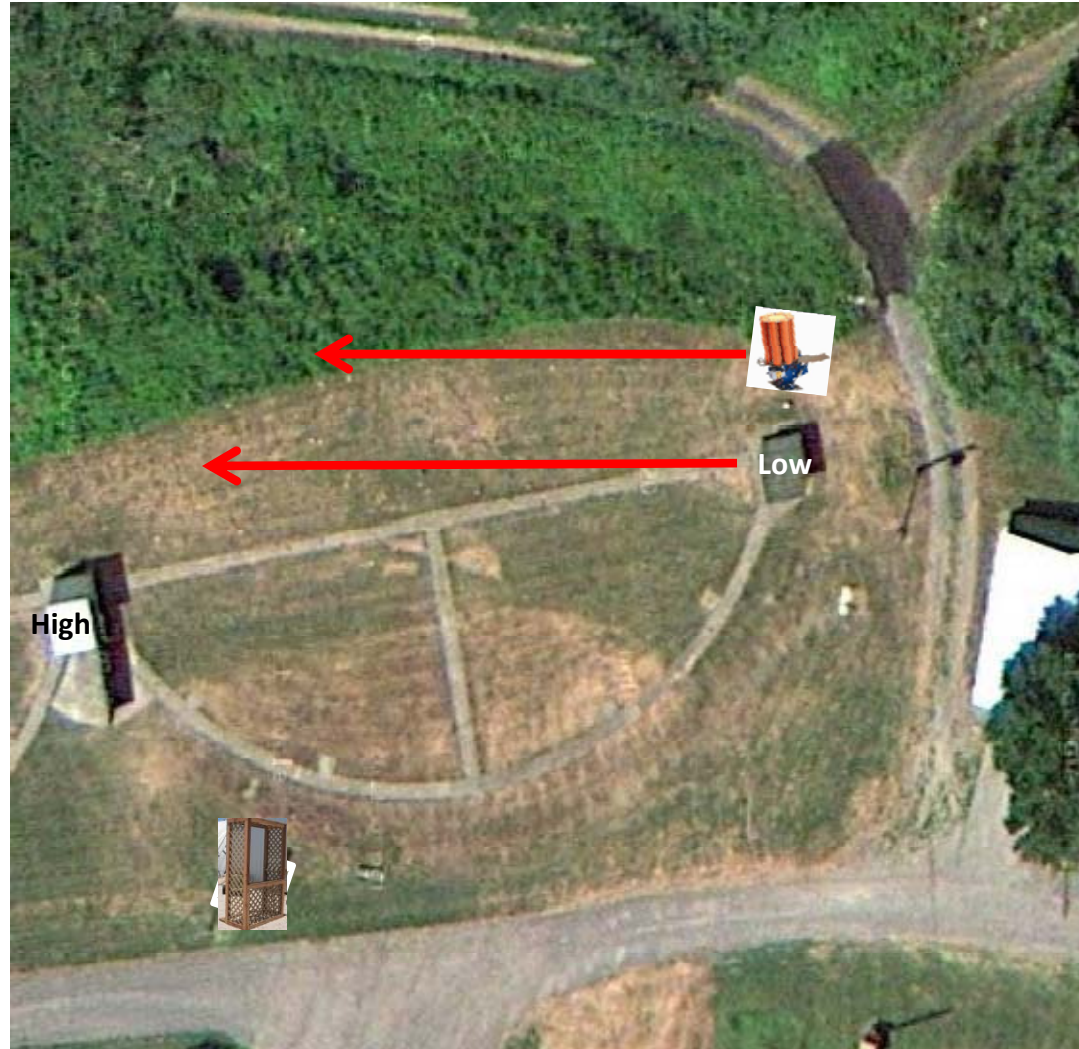
Skeet 5

4 Boxes of Targets
3 Report Pair (6)
Automatic then High House



Skeet 6

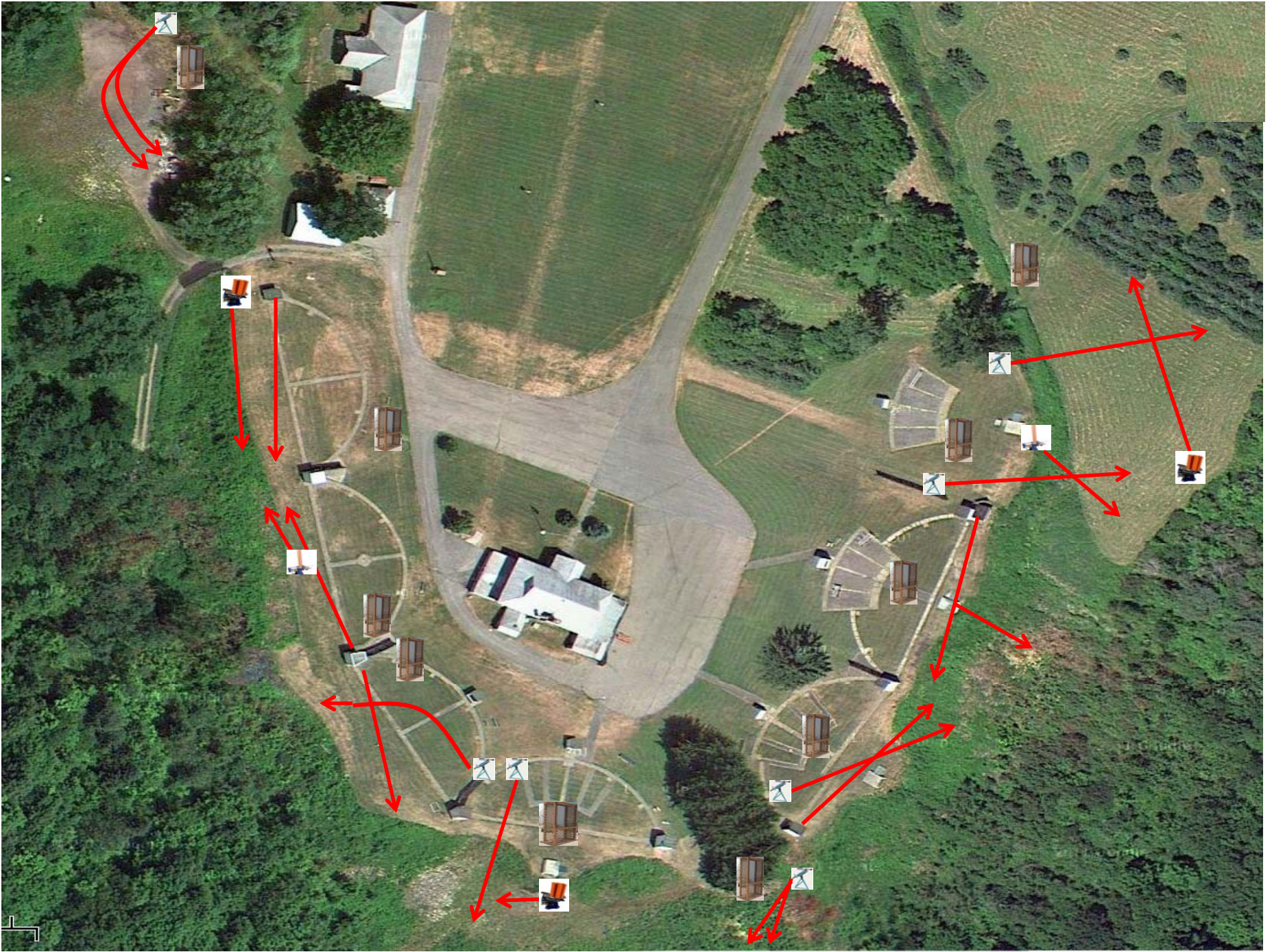
4 Boxes of Targets
3 True Pair (6)
Low House and **Blue** Promatic



The Pit

- 2 Boxes of Targets Standard
- 1 Box Battues
- 2 True Pair (4)
- Manual (Std, Battue)





The Menu – 11/09/2013

| | | | |
|-------------|-----------------|--------------------------------|------|
| 1) Field | - 3 Report Pair | - Manual then Blue Promatic | (6) |
| 2) Trap | - 3 True Pair | - Manual and Automatic | (6) |
| 3) 5-Stand | - 2 Report Pair | - High House then Trap House | (4) |
| 4) Skeet #2 | - 2 True Pair | - Manual and Low House | (4) |
| 5) Gallows | - 2 True Pair | - Manual | (4) |
| 6) Skeet #3 | - 3 True Pair | - Manual and Old Promatic | (6) |
| 7) Skeet #4 | - 2 Report Pair | - Manual then Low House | (4) |
| 8) Skeet #5 | - 3 Report Pair | - Automatic then High House | (6) |
| 9) Skeet #6 | - 3 True Pair | - Low House and Blue Promatic | (6) |
| 10) The Pit | - 2 True Pair | - Manual (Standard and Battue) | (4) |
| | | ----- | (50) |