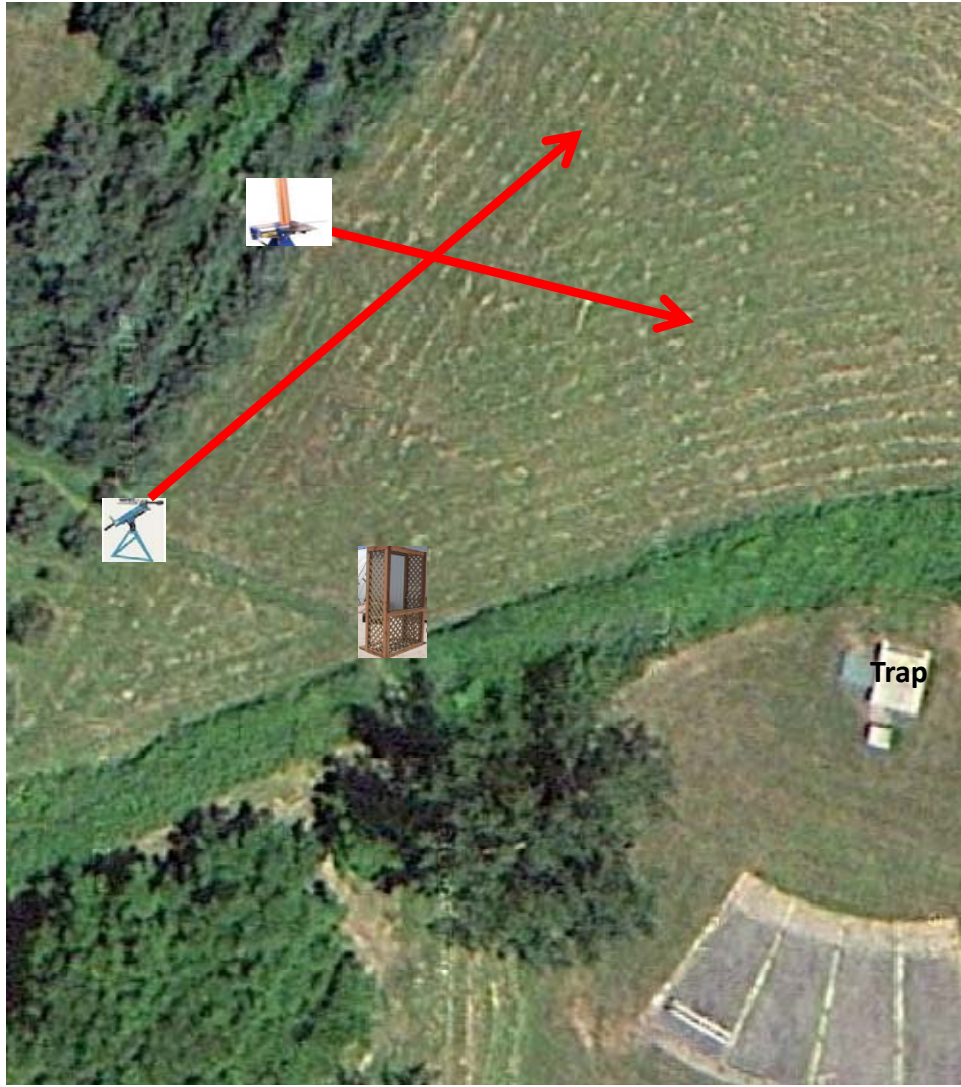


Field

4 Boxes of Targets
3 Report Pair (6)
Manual then Automatic



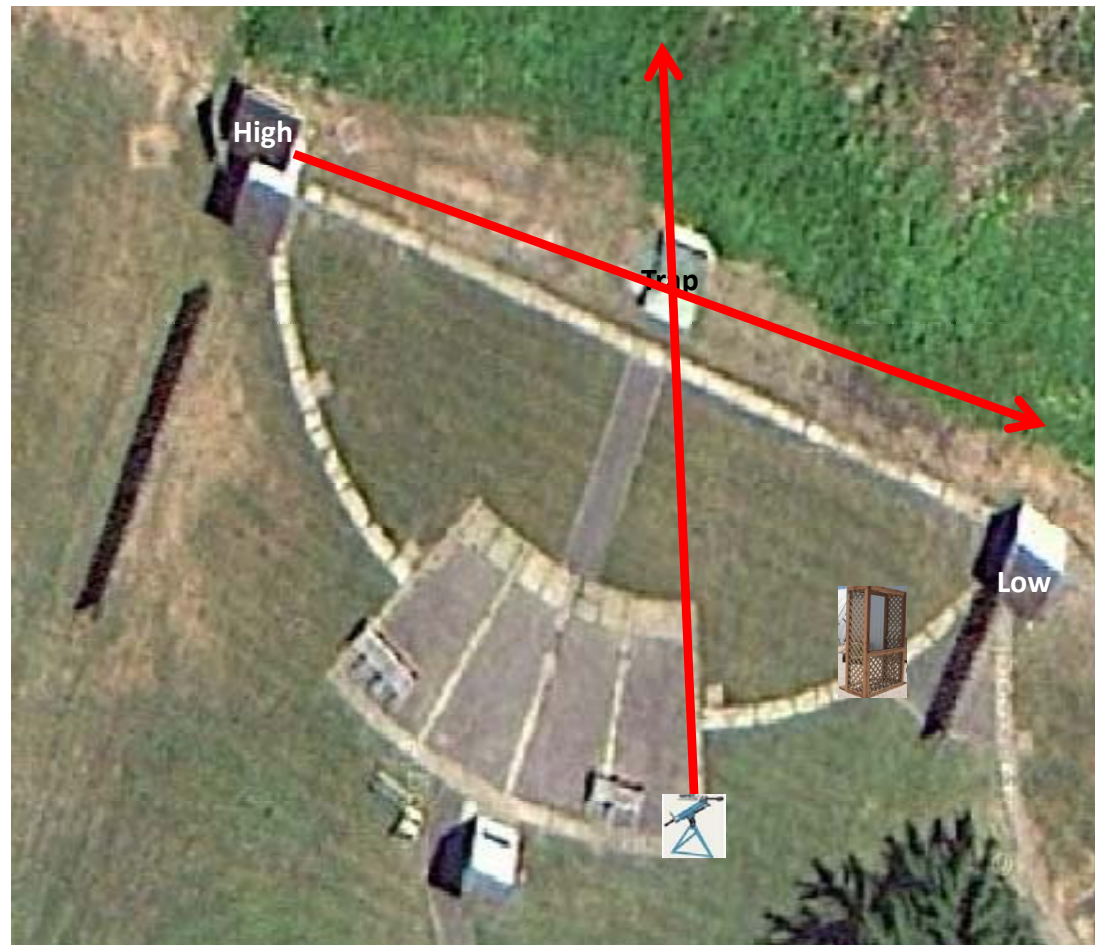
Trap Field

4 Boxes of Targets
3 Report Pair (6)
Trap House then Automatic



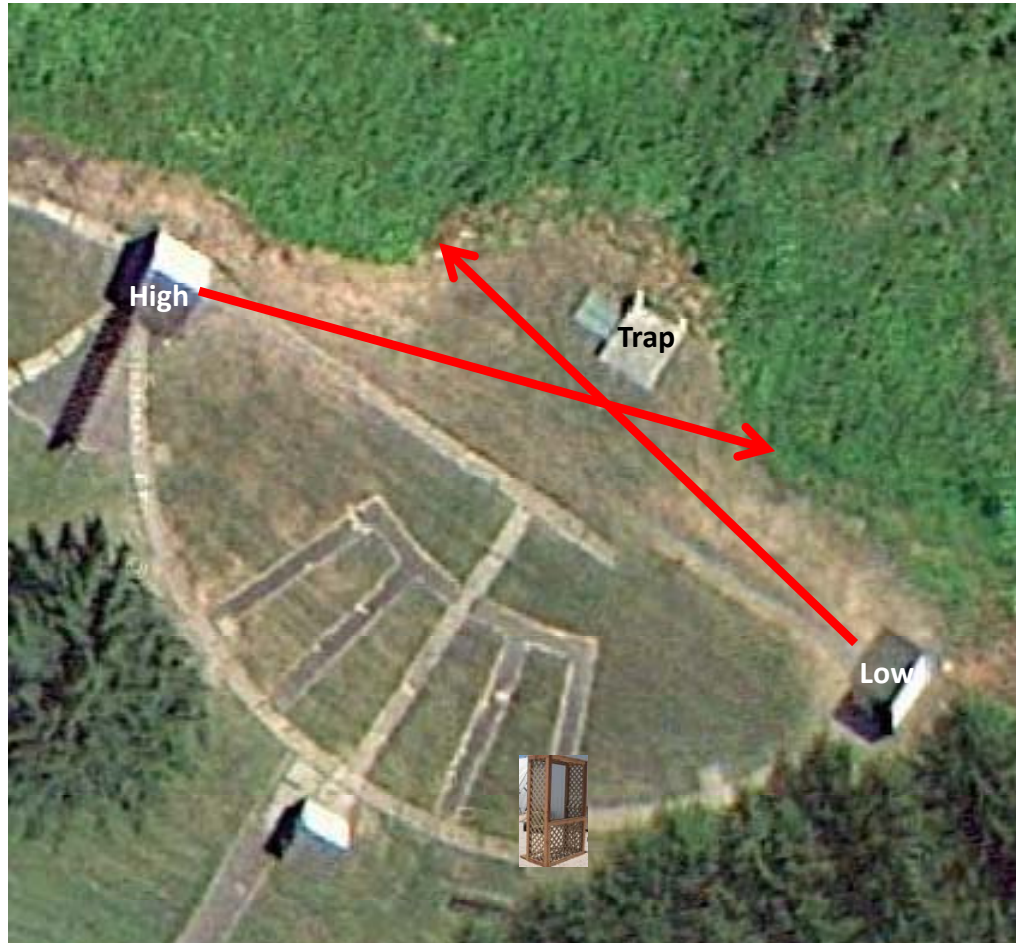
5-Stand

3 Boxes of Targets
2 Report Pair (4)
Manual then High House



Skeet 2

3 Boxes of Targets
2 True Pair (4)
High House and Low House



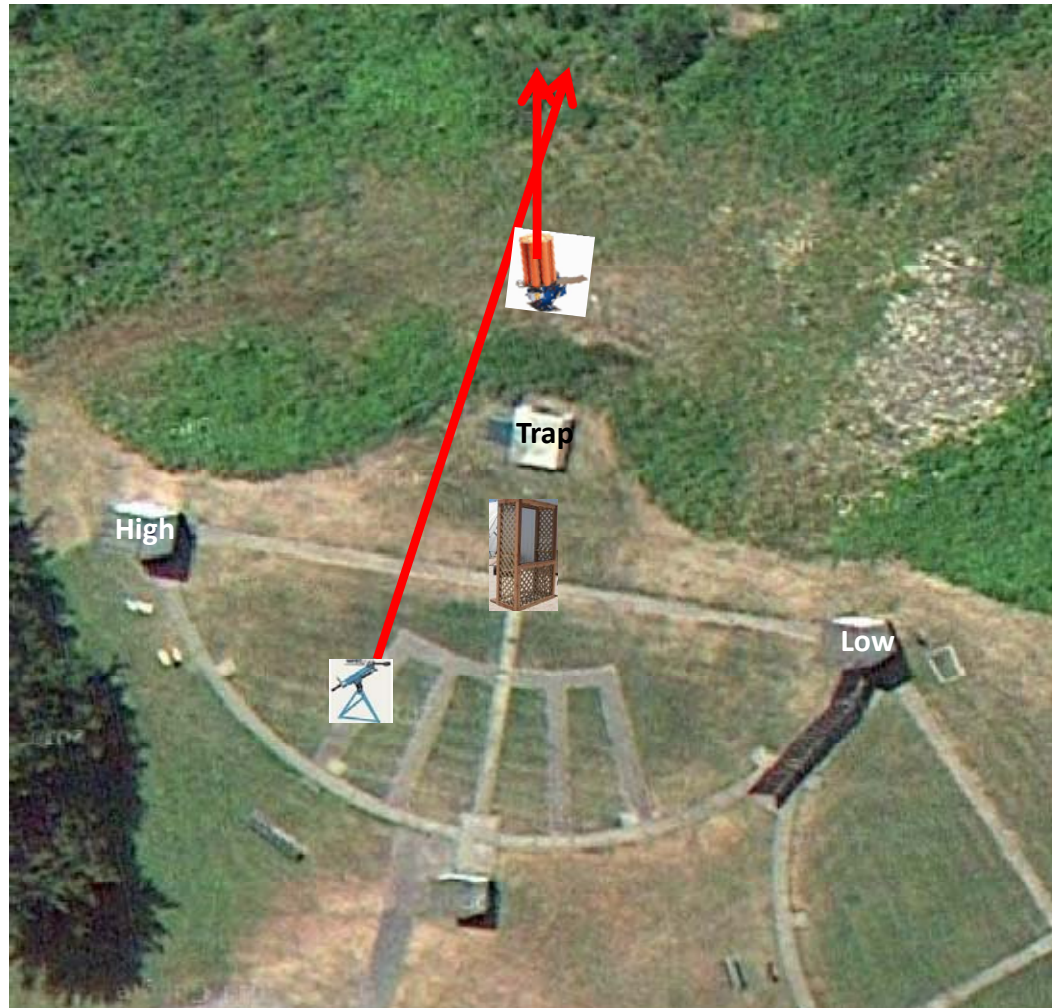
Gallows

4 Boxes of Targets
3 True Pair (6)
Manual and Automatic



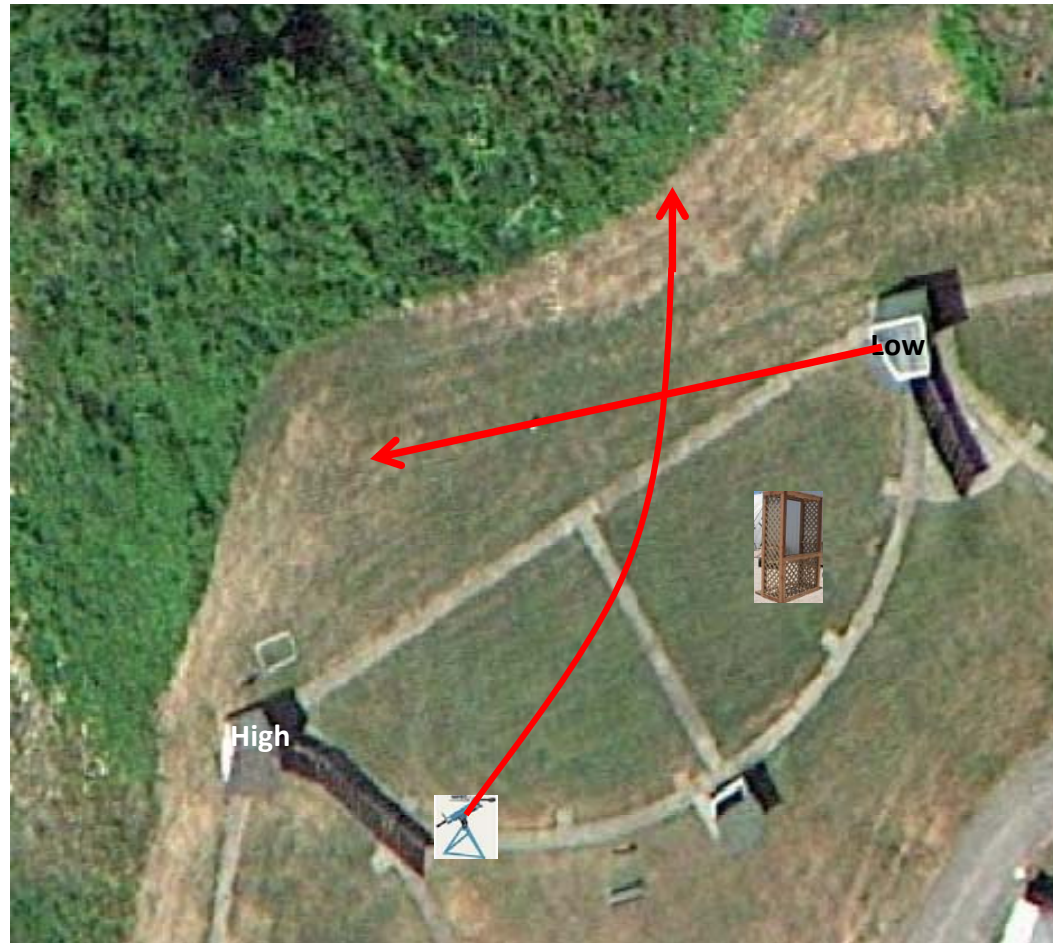
Skeet 3

4 Boxes of Targets
3 True Pair (6)
Manual and **Old** Promatic



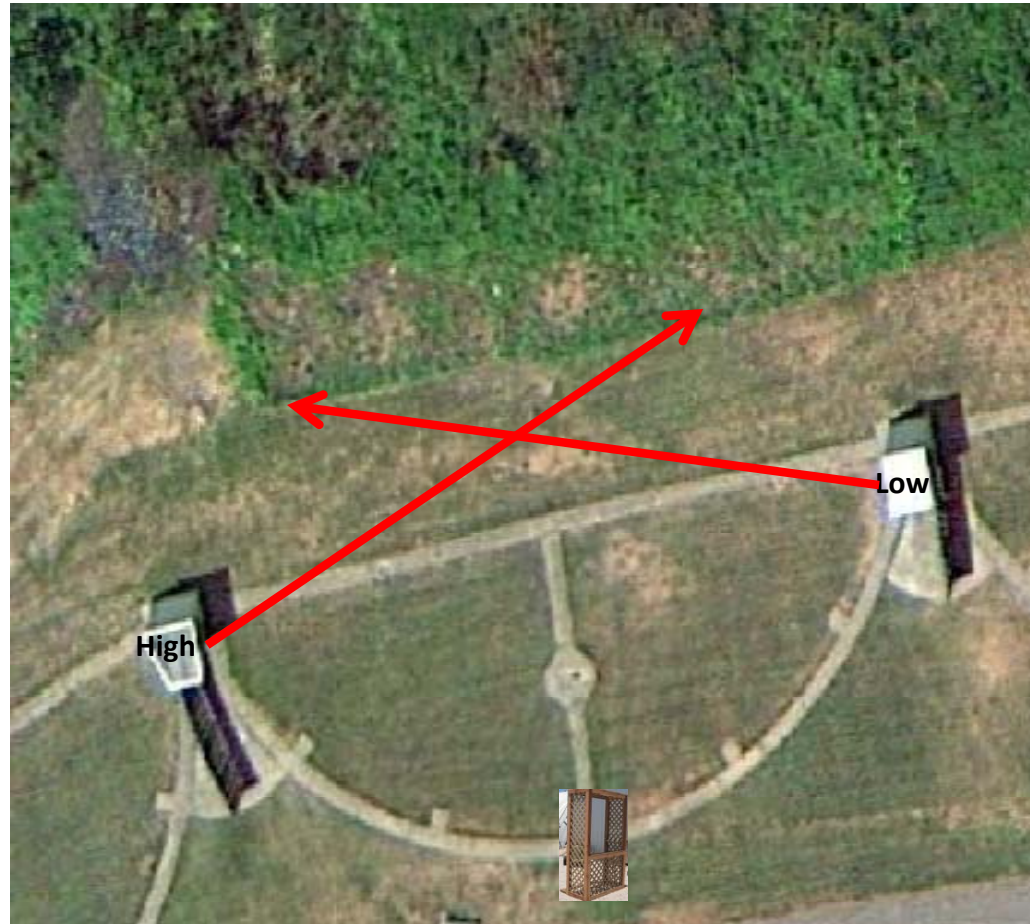
Skeet 4

3 Boxes of Targets
2 Report Pair (4)
Manual (Tippy Trap) then Low House



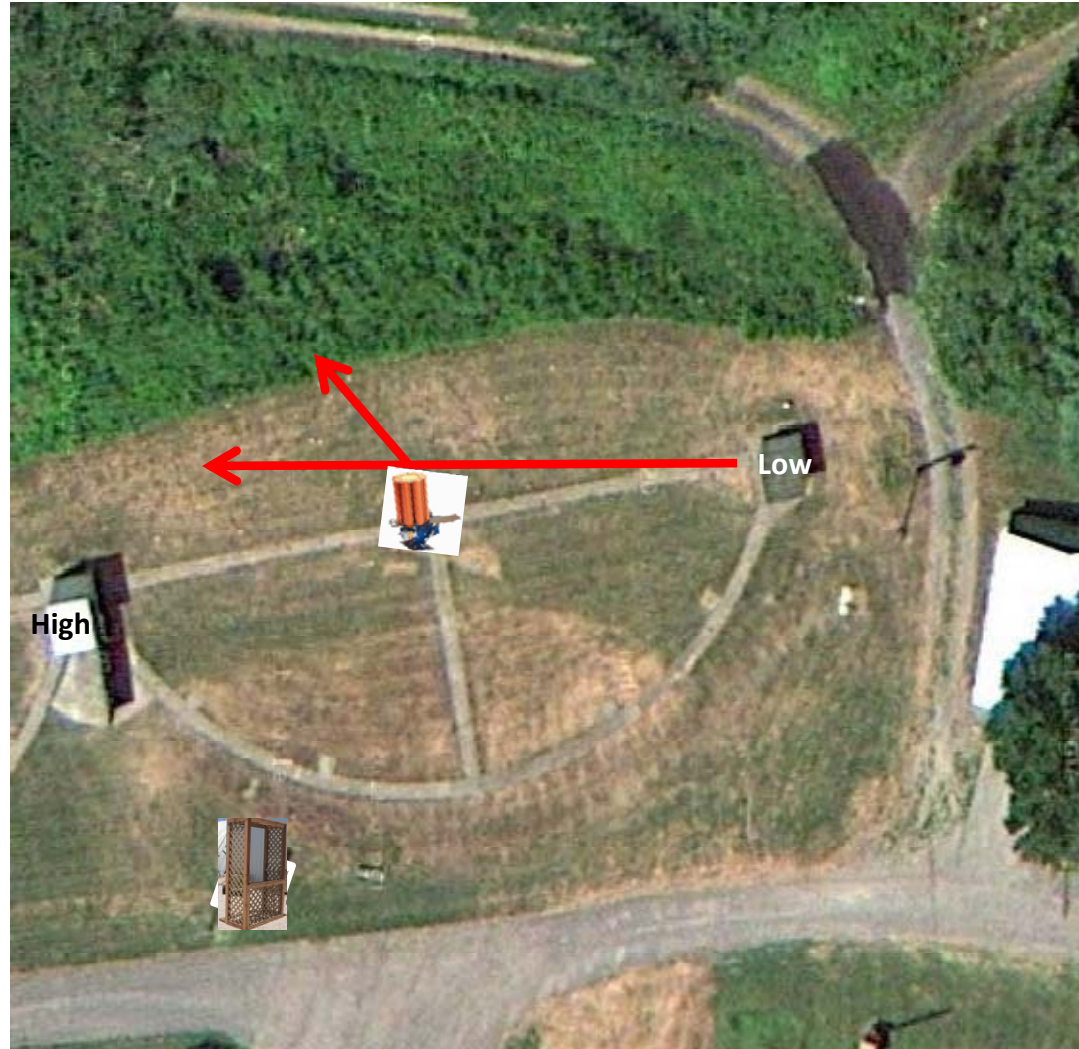
Skeet 5

3 Boxes of Targets
2 Report Pair (4)
Low House then High House



Skeet 6

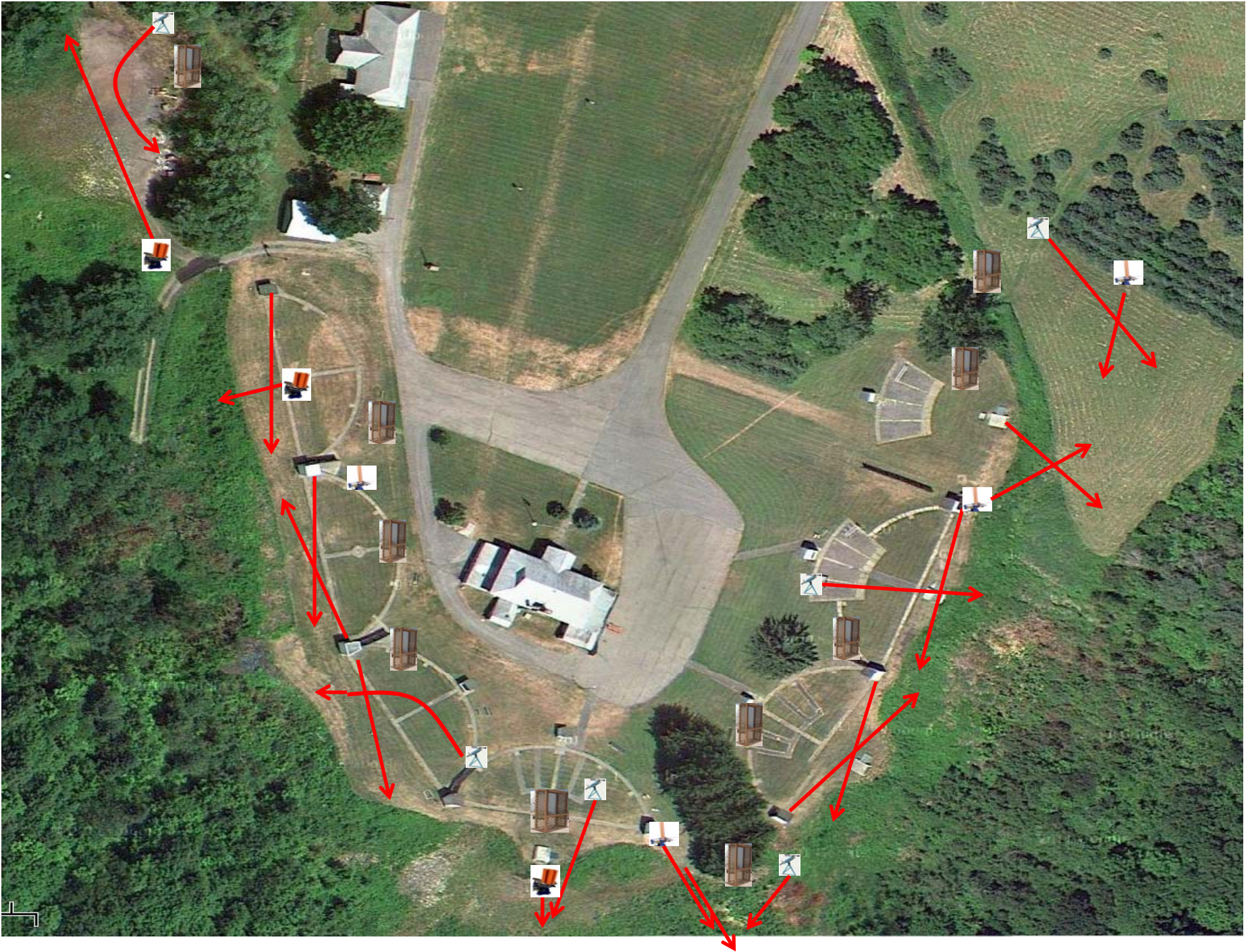
3 Boxes of Targets
2 True Pair (4)
Low House and **Blue** Promatic



The Pit

4 Boxes of Targets
3 Report Pair (6)
Manual then **Blue** Promatic





The Menu – 10/12/2013

1) Field	- 3 Report Pair	- Manual then Automatic	(6)
2) Trap	- 3 Report Pair	- Trap House then Automatic	(6)
3) 5-Stand	- 2 Report Pair	- Manual then High House	(4)
4) Skeet #2	- 2 True Pair	- High House and Low House	(4)
5) Gallows	- 3 True Pair	- Manual and Automatic	(6)
6) Skeet #3	- 3 True Pair	- Manual and Old Promatic	(6)
7) Skeet #4	- 2 True Pair	- Manual and Low House	(4)
8) Skeet #5	- 2 Report Pair	- Low House then High House	(4)
9) Skeet #6	- 2 True Pair	- Low House and Blue Promatic	(4)
10) The Pit	- 3 Report Pair	- Manual then Blue Promatic	(6)

			(50)